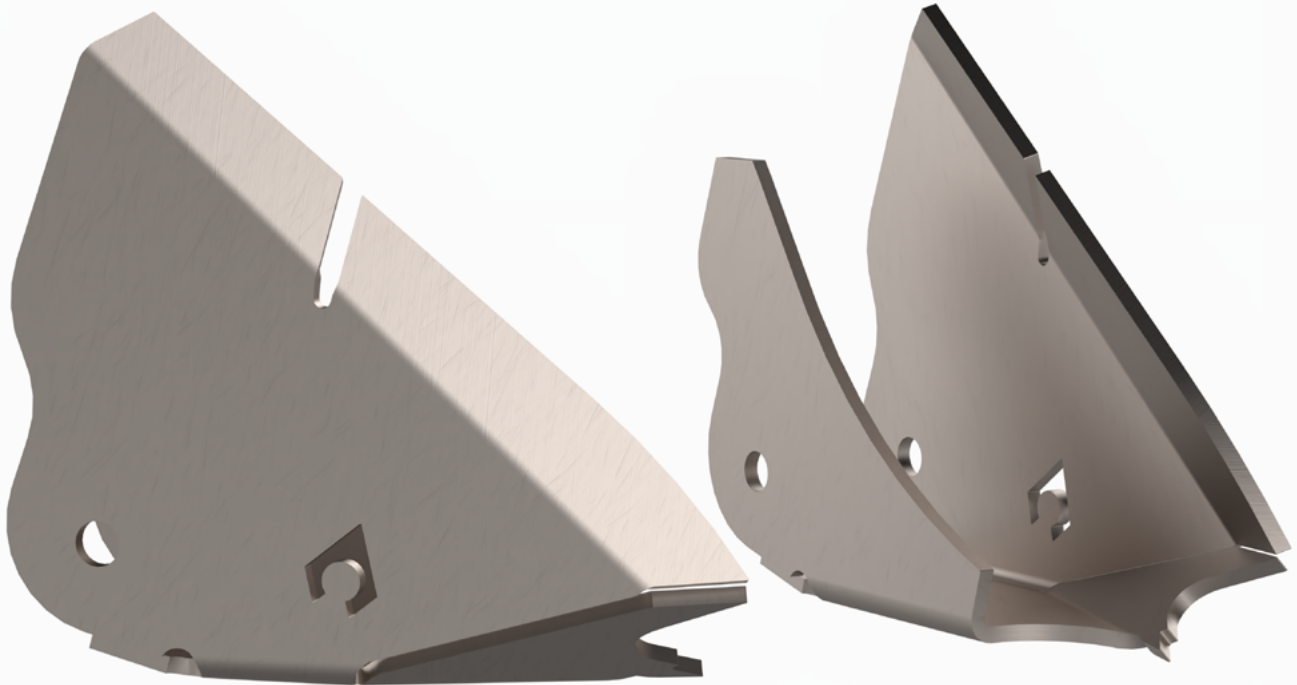


JT4560

JT REPLACEMENT REAR LCA FRAME BRACKET



ESTIMATED INSTALLATION TIME

2 hours

REQUIRED TOOLS & SUPPLIES

- 21mm Socket
- 24mm wrench
- angle grinder or other cutting equipment
- Welder

REQUIRED SKILLS

- General Mechanics Skills

NOTES:

- Component appearance in instructions may vary from those received

WARNING MESSAGES

This product demands a basic understanding of mechanical procedures and should only be installed by individuals proficient with mechanic's tools. Any tasks involving welding or cutting parts should be performed by trained professionals. Artec Industries disclaims responsibility for mishaps arising from improper installation, or any damage or accidents resulting from cutting or welding tasks. Exercise caution and seek professional help as required.

SAFETY

1. We've furnished a written installation guide, along with relevant details, to aid you in making safety-conscious decisions.
2. While these guidelines will highlight potential risks, it's crucial to exercise your personal judgment when performing any required steps.
3. Before initiating any tasks, it's essential to conduct a job safety analysis to identify specific hazards in your situation and take measures to eliminate or protect against them.
4. Before commencing the installation of this product, make sure you familiarize yourself with and fully understand all safety warnings and guidelines.

DISCLAIMERS

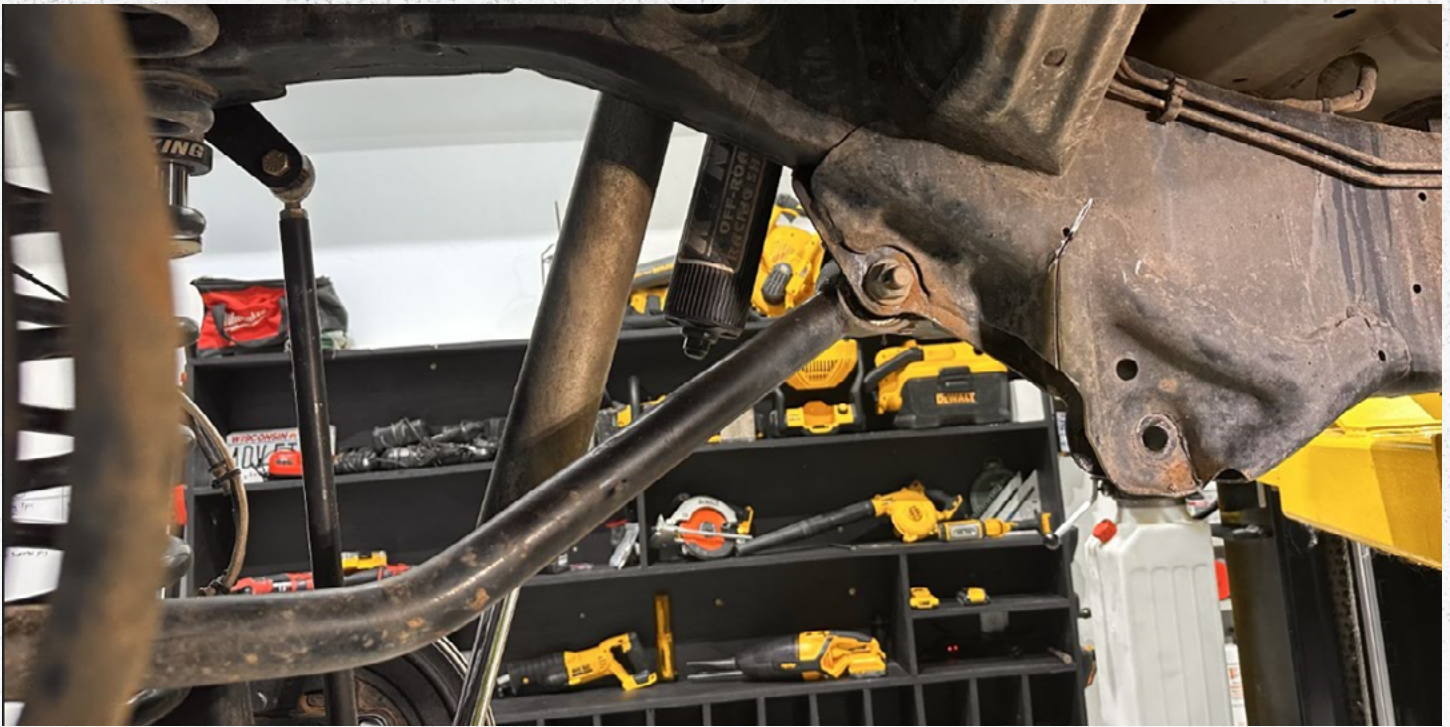
All Artec Industries products should be installed by a competent, certified individual following the intended installation instructions for each product. Incorrect installations not only nullify any warranties but could also lead to product damage or even damage to the vehicle it's installed on. Prior to installation, carefully read all provided instructions or manuals, and watch any associated videos. For any doubts or queries, reach out to Artec Industries before beginning the installation process.

Many products necessitate lifting and supporting the vehicle off the ground. It is the installer's responsibility to ensure this can be done safely and that the right equipment is at hand to carry out the installation. Artec Industries installation instructions presume the installer is competent to lift the vehicle safely and correctly.

Modified vehicles won't perform identically to their stock counterparts. It's incumbent upon the vehicle owner to understand the alterations such modifications will bring to the vehicle's driving dynamics. These might encompass (but aren't limited to): changes in handling, braking, rollover angle, and potential incompatibilities with the factory-installed anti-lock braking systems, stability control systems, or traction control systems.

SPECIAL NOTES

- Unless otherwise noted, all hardware should be **LOOSELY** tightened by hand until the very end of installation when all components are attached.



Step 1:

Using a 21mm socket and 24mm wrench, remove the lower control arm bolt on the frame side of the vehicle.



Step 2:

Remove the rear lower control arm bracket and grind flush to the frame.

Do not remove or cut the upper control arm bracket!

ASSEMBLY INSTRUCTIONAL GUIDE



Step 3:

Install JT4560-1 onto the driver side of the vehicle. Use the slot in the bracket to help locate the bracket.



Step 3: continued

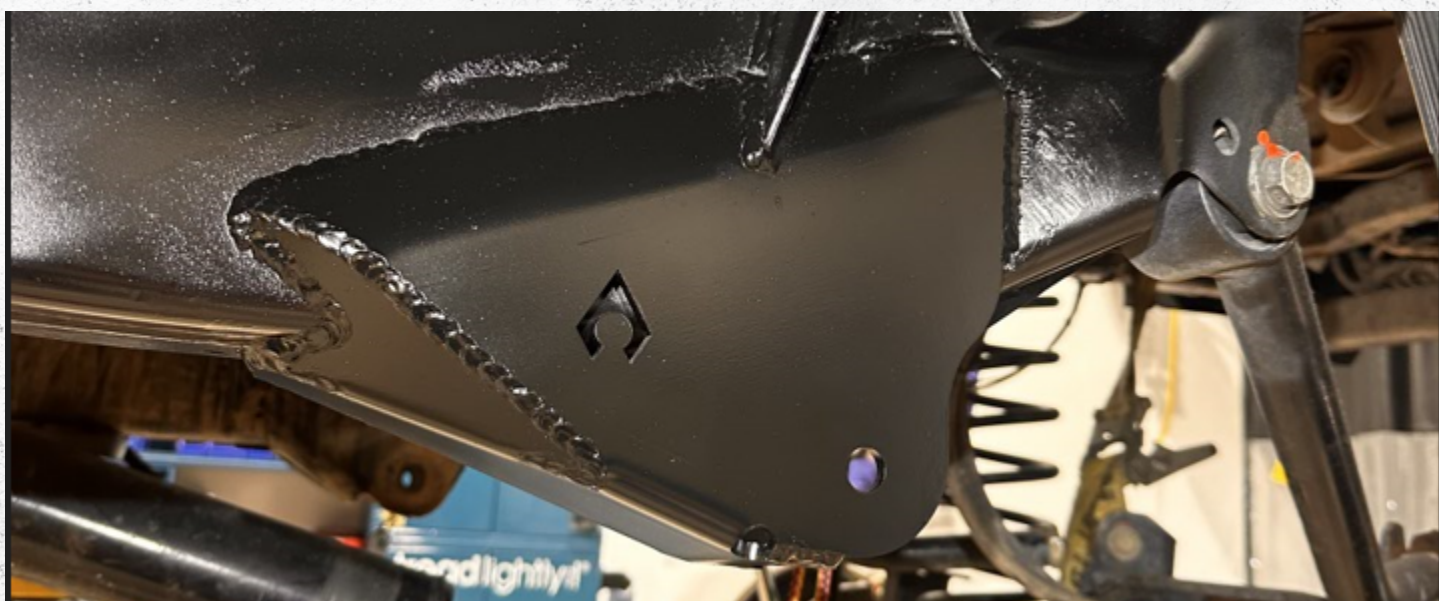
The bracket is parallel to the frame and should have some clearance to the upper control arm bracket. some trimming may be required.

ASSEMBLY INSTRUCTIONAL GUIDE



Step 4:

Weld the bracket onto the vehicle. We recommend a stitch weld method, moving to different parts of the bracket to avoid adding too much heat into the frame.



Step 5:

Paint the bracket to prevent corrosion and repeat step 1-4 on the opposite side with JT4560-2.

Verify ALL previously installed hardware is tight / torqued to specifications.

CONCLUSION

Congratulations on finishing the installation for your Artec Industries replacement LCA brackets. Before driving your vehicle, inspect all bolts to ensure they are properly tightened.

If you used a vehicle lift, take proper care to ensure you lower your vehicle safely. If you used a vehicle lift, take proper care to ensure you lower your vehicle safely. Now take your vehicle out and enjoy the outdoors in confidence.

MAINTENANCE / CARE

- After 500 miles, inspect all components and hardware to ensure they are properly fastened.
- If driving during the winter where salt is used on the roads, thoroughly and frequently wash underside of vehicle to prevent salt based corrosion.
- If removal of skid panels is required for vehicle maintenance, and bolts will not loosen, tap the bolt heads with a small sledge hammer using moderate force. This will allow the threads to loosen.
- Spray wax or similar products can be used to create a protective barrier on raw metals to protect against long term corrosion.