

ORIENTATION OF JOINTS

Orient the Joint for maximum amount of movement with the head of joint perpendicular to bolt / head of the joint vertical in the mounting bracket. This same rule for orientation needs to be followed for all heim joints. The photo below shows the correct way (LEFT SIDE) and the incorrect way (RIGHT SIDE) to orient a joint.



CORRECT

INCORRECT

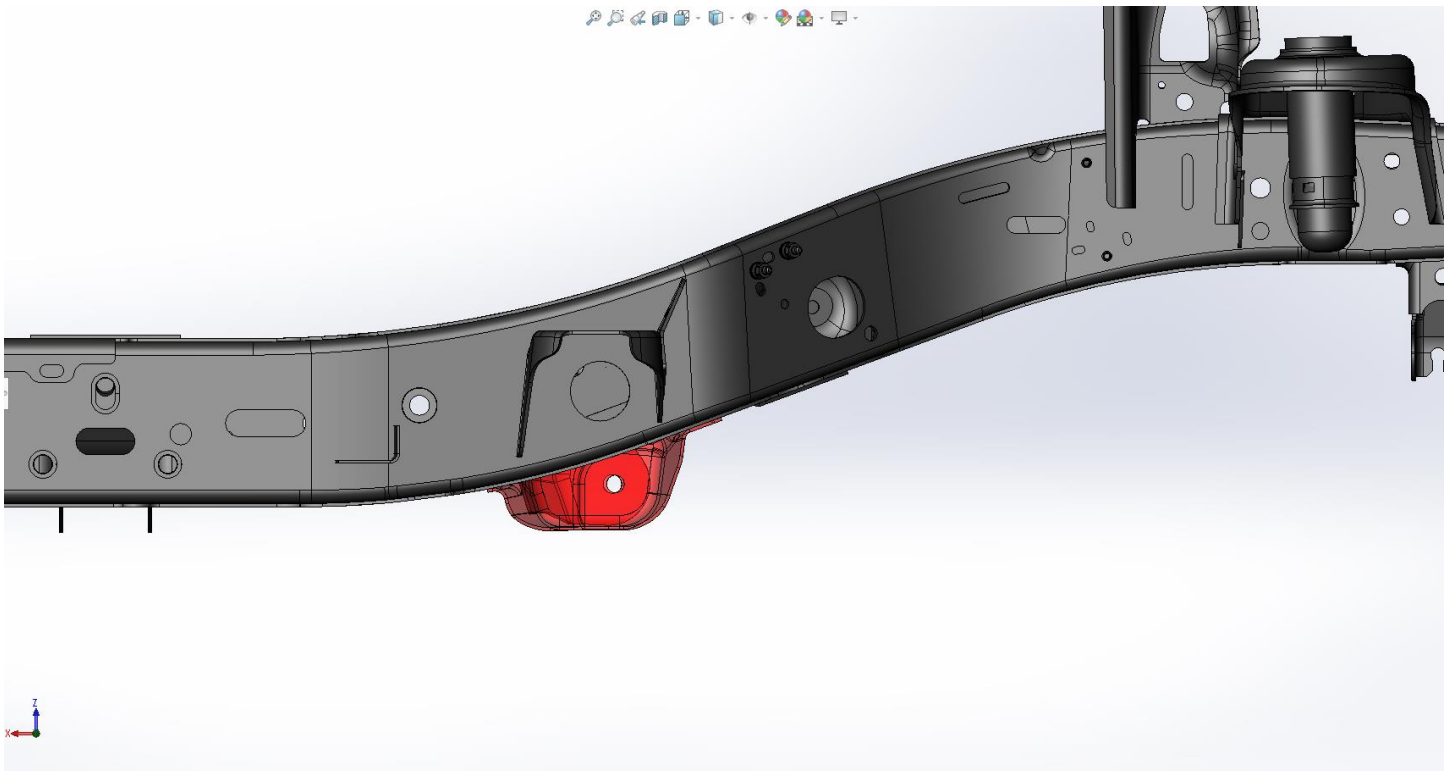
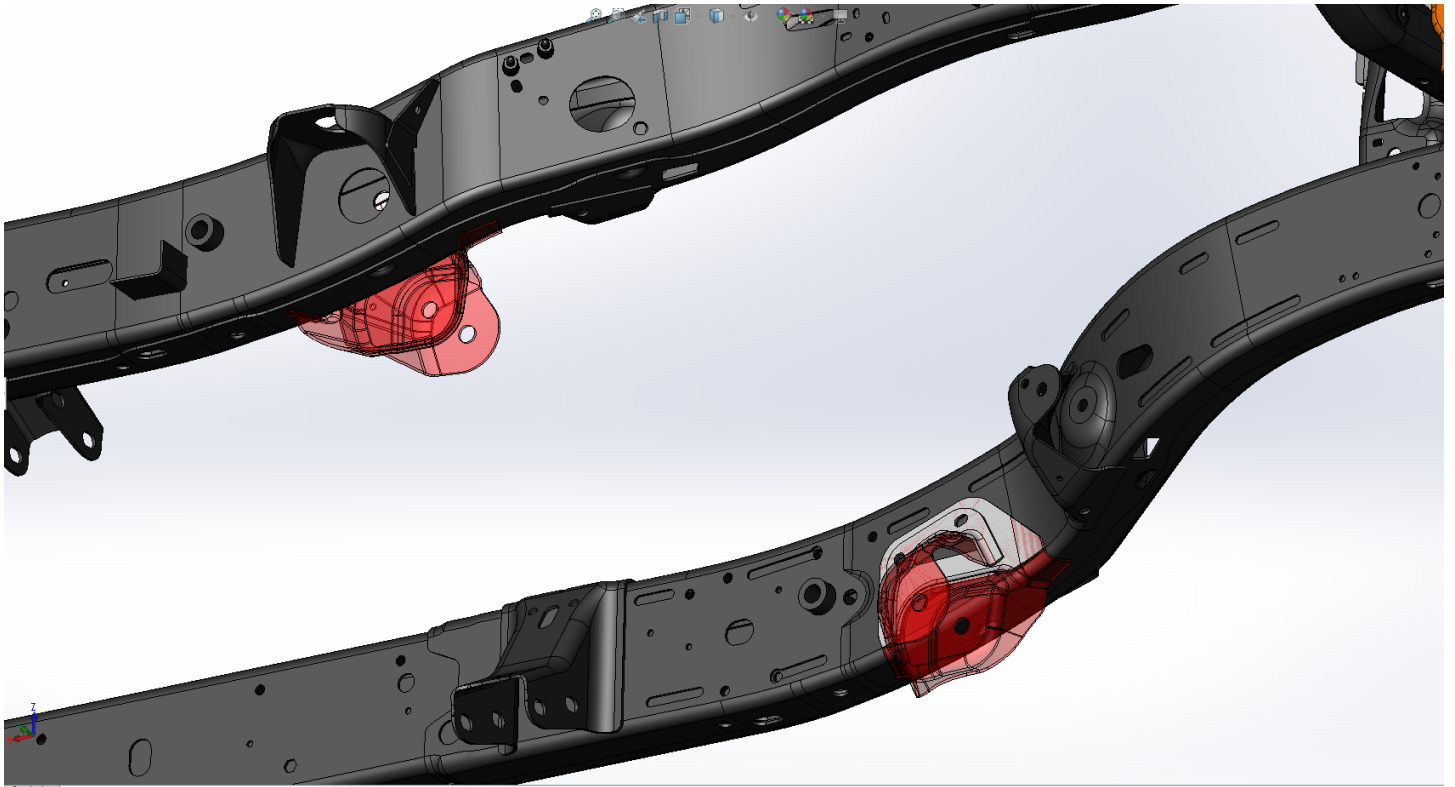
***PLEASE NOTE:** All Control Arms, Track Bars, and Sway Bar Links come preassembled, but require adjustment to the below recommended starting dimensions. These measurements are taken from the center of one bolt hole to center of the other bolt hole.

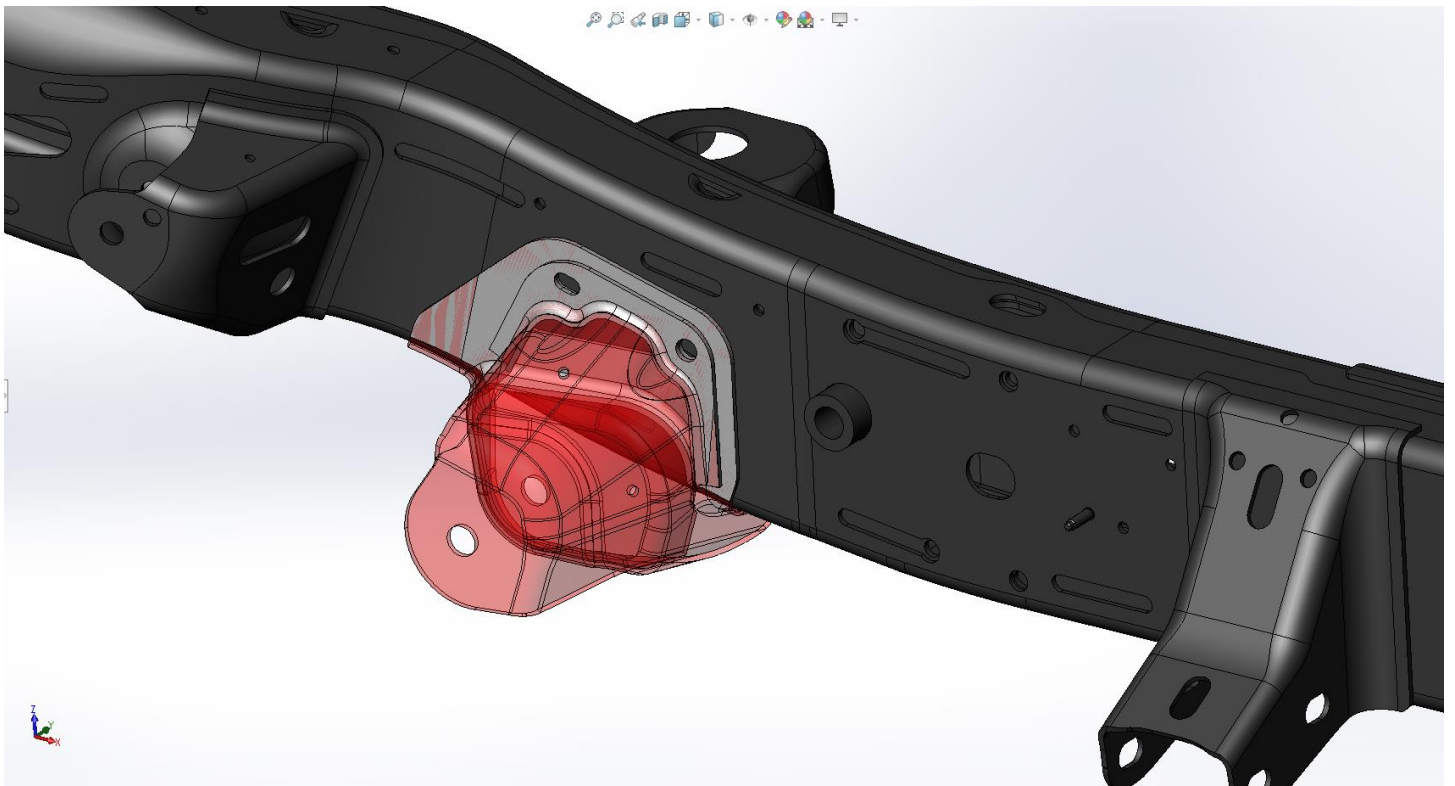
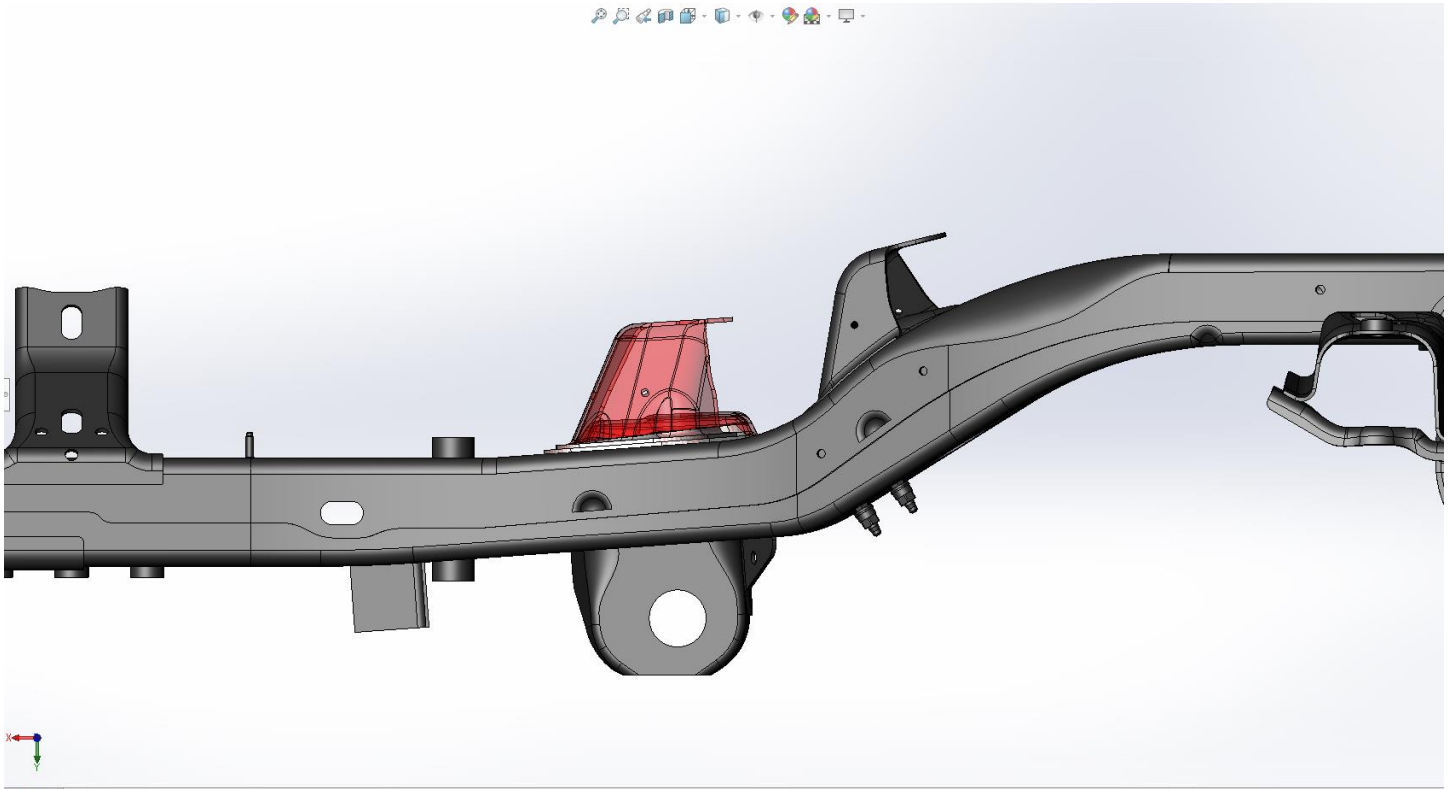
TORQUE VALUES FOR HARDWARE AND JAM NUTS

- **10mm & 3/8"** bolts are torqued to **30-35 ft-lbs.**
- **12mm & 1/2"** bolts are torqued to **75-80 ft-lbs.**
- **14mm & 9/16"** bolts are torqued to **90-100 ft-lbs.**
- **16mm & 5/8"** bolts are torqued to **120-140 ft-lbs.**
- **7/8" Jam Nuts** are to be torqued **200-220 ft-lbs.** Up to 5/8" of threads showing past the jam nut is safe for final adjustment. These specifications are critical for the overall longevity of the threaded section.
- **1" Jam Nuts** are to be torqued to **250-300 ft-lbs.** **GET YOUR BIG BOY PANTS ON!** Up to 3/4" of threads showing past the jam nut is safe for final adjustment. These specifications are critical for the overall longevity of the threaded section.
- **1 1/4" Jam Nuts** are to be torqued to **275-325 ft-lbs.** **GET YOUR BIG BOY PANTS ON!** Up to 7/8" of threads showing past the jam nut is safe for final adjustment. These specifications are critical for the overall longevity of the threaded section.

Artec has designed the HD lower front long arm bracket system to surround the OEM lower control arm mount so that they do not need to be fully removed from the frame rails. In our experience, most shops skip the effort to completely remove them due to the time-consuming nature of fully removing them. Our design will allow you to save time and effort by only removing the necessary sheet metal.

-Remove ONLY lower control arm section as shown:





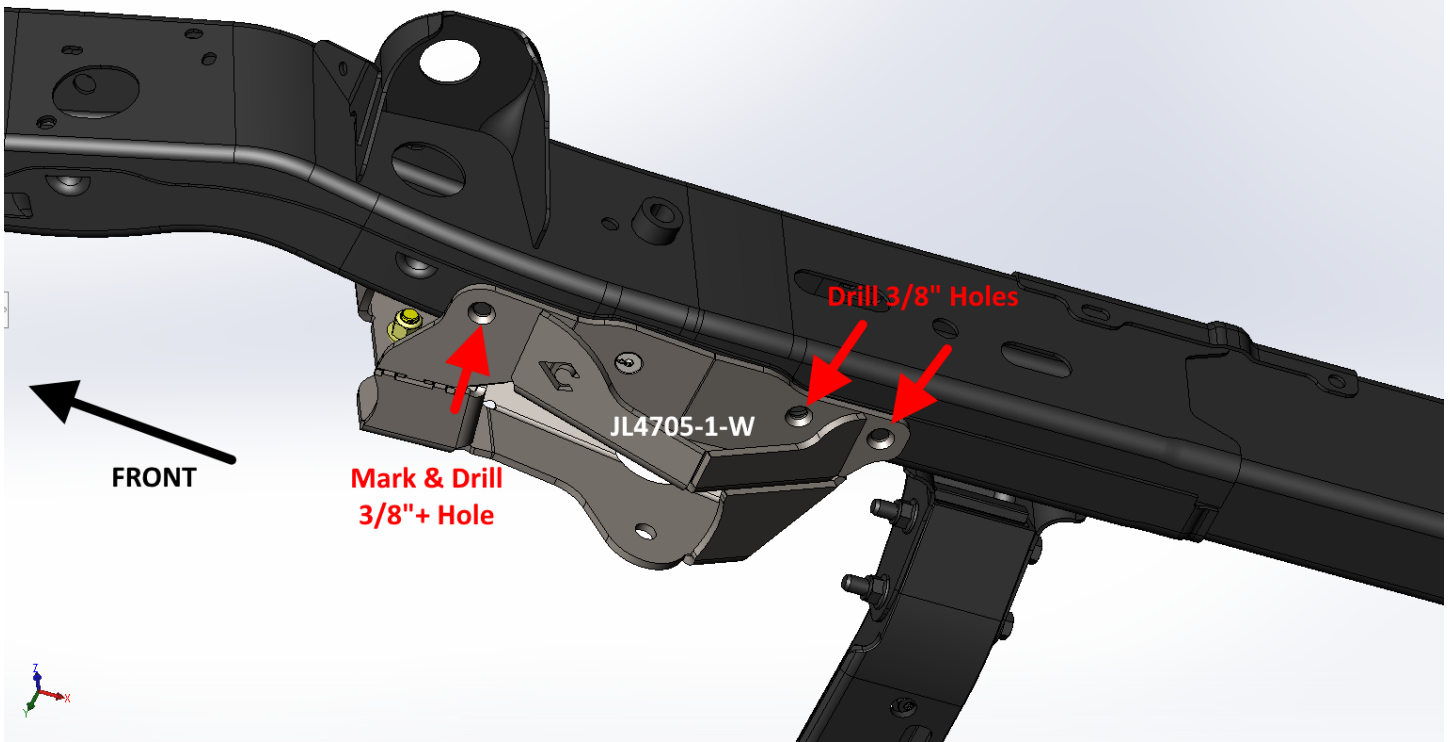


DVR SIDE FRONT FRAME RAIL

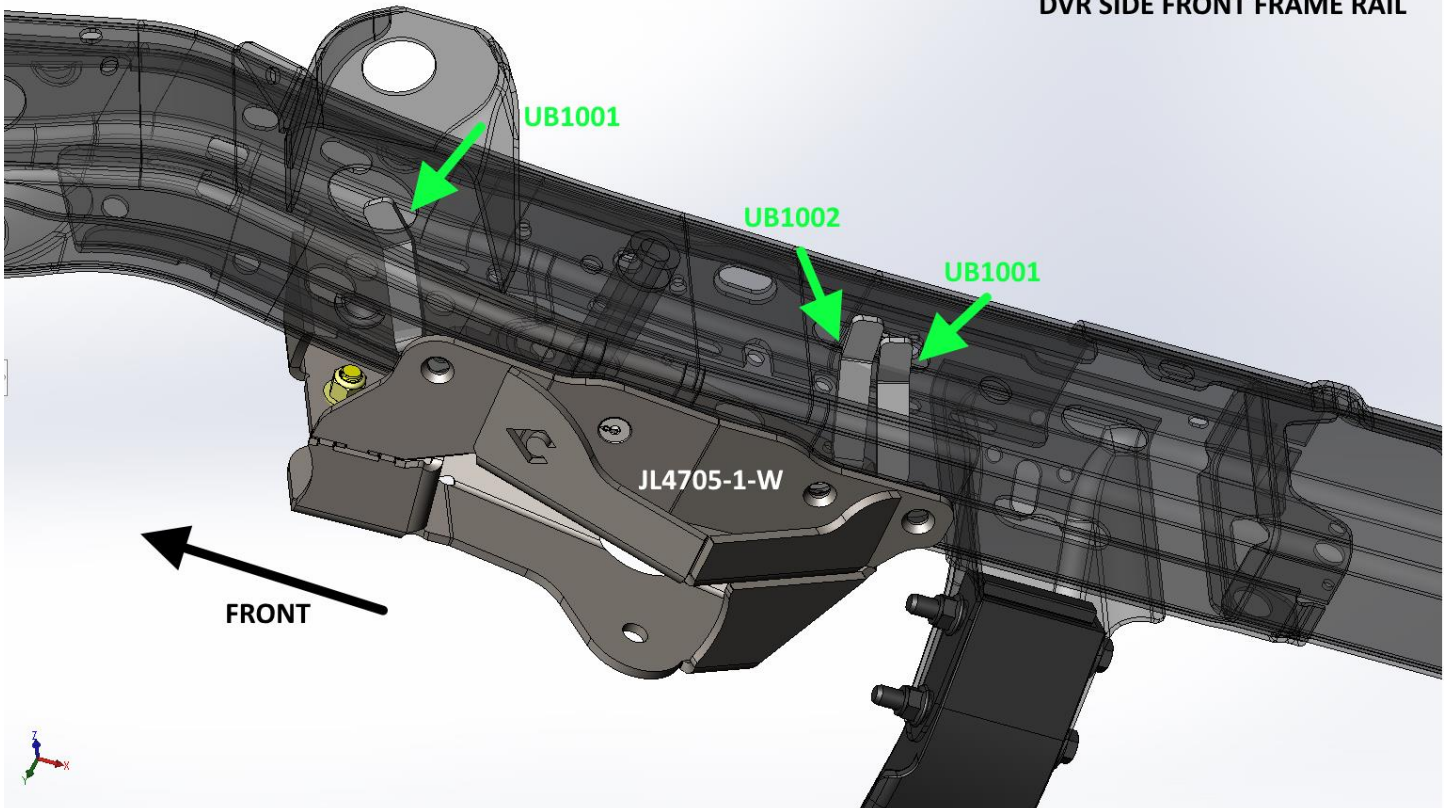




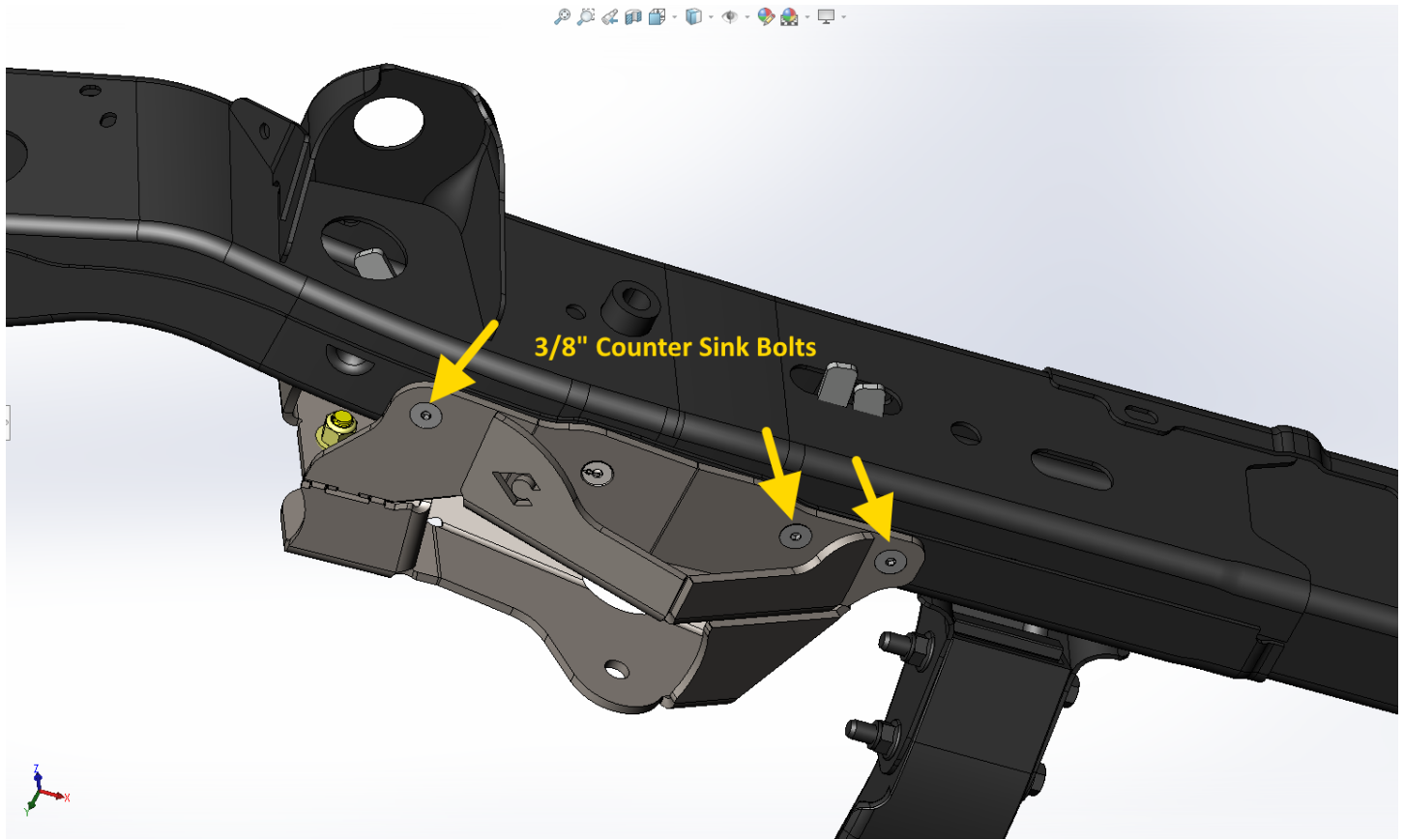
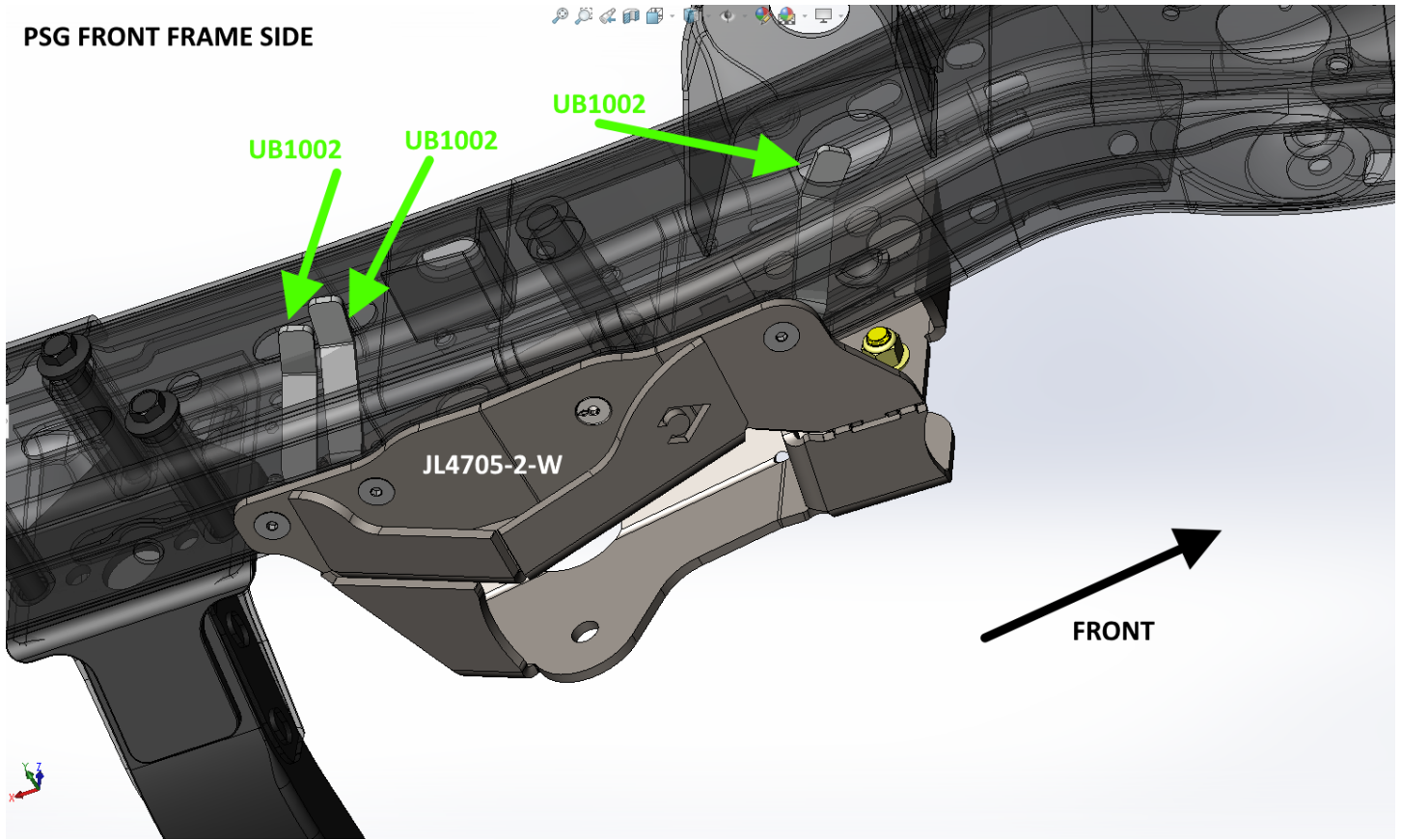
DVR SIDE FRONT FRAME RAIL

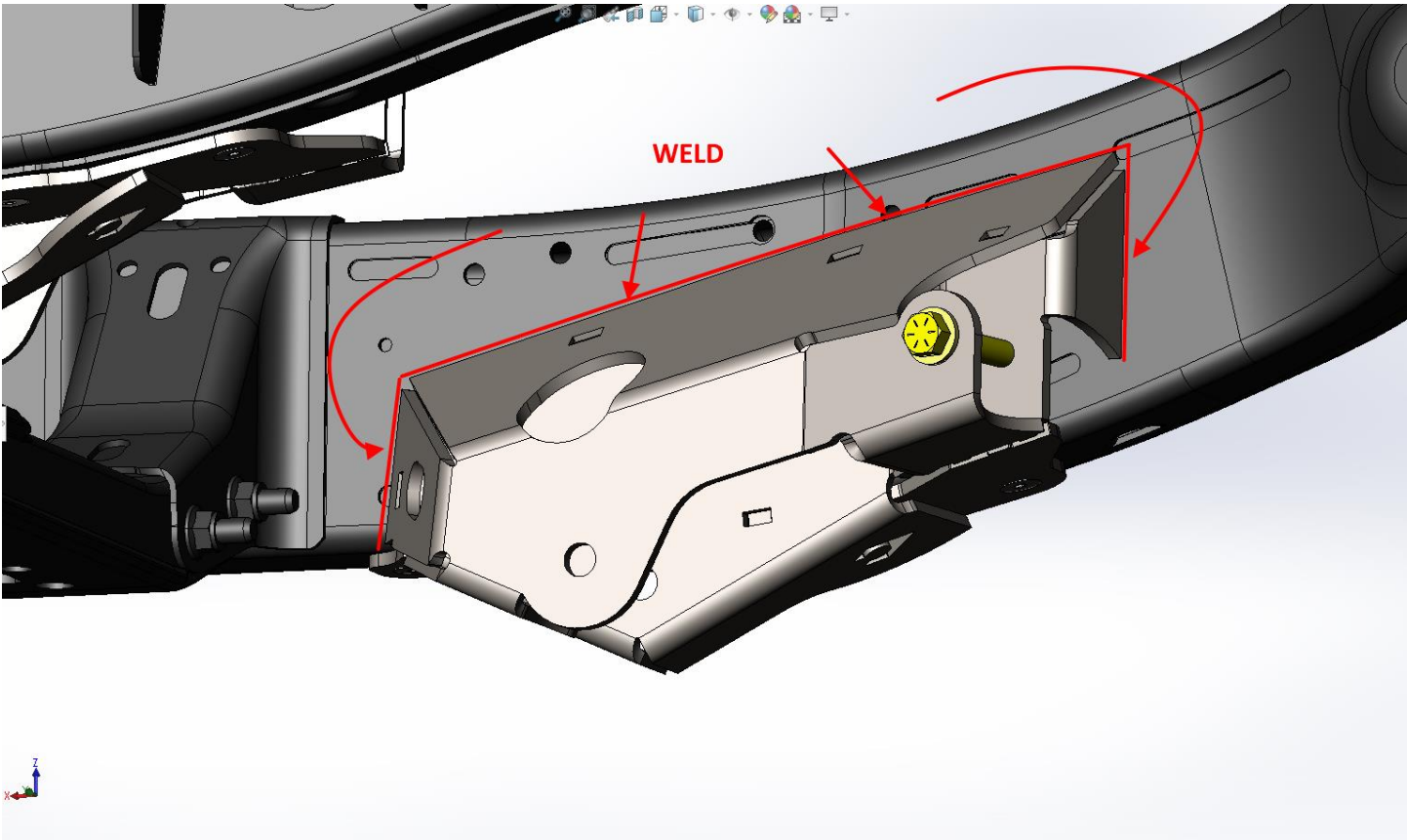
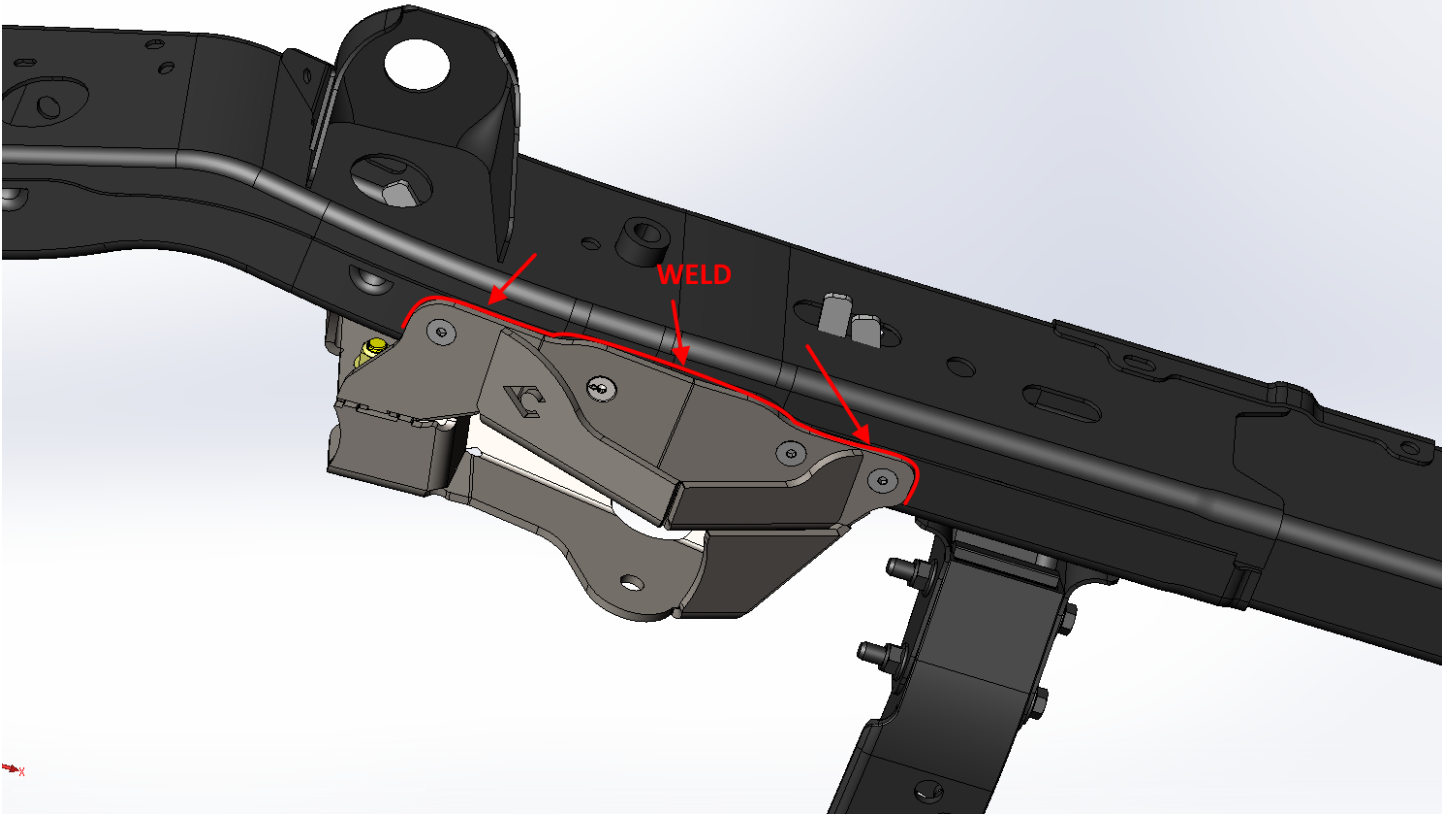


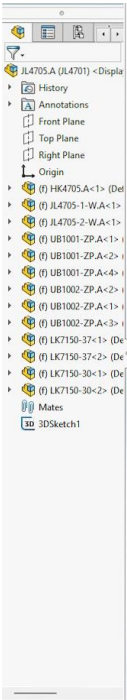
DVR SIDE FRONT FRAME RAIL



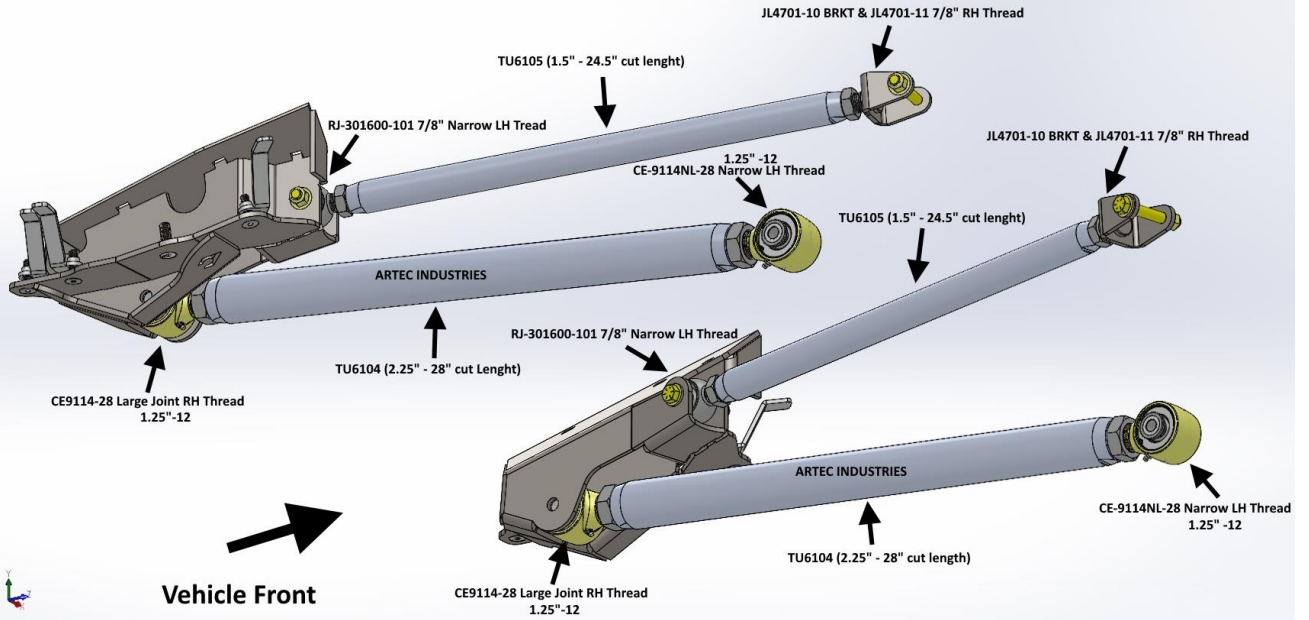
PSG FRONT FRAME SIDE







JL4705 JL / JT Long Arm



SET FRONT UPPER LINK TO 29.5" Center-to-Center of Joint
SET FRONT LOWER LINK TO: 33.5" Center-to-Center of Joint

