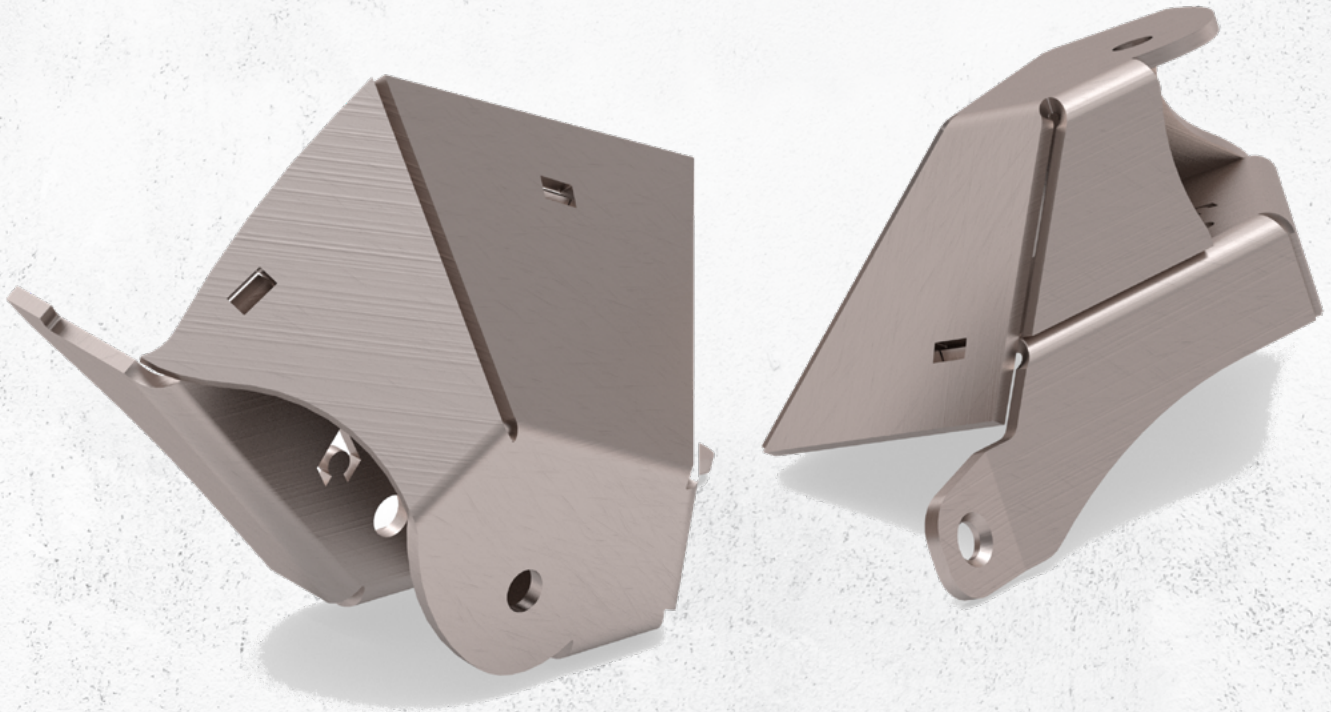


JL4596

JL-JT REPLACEMENT FRONT LCA FRAME BRACKET



ESTIMATED INSTALLATION TIME

1.5 hours

REQUIRED TOOLS & SUPPLIES

- 21mm Socket
- 24mm wrench
- 7/32 hex tool
- angle grinder or other cutting equipment
- Welder

REQUIRED SKILLS

- General Mechanics Skills

NOTES:

- Component appearance in instructions may vary from those received

WARNING MESSAGES

This product demands a basic understanding of mechanical procedures and should only be installed by individuals proficient with mechanic's tools. Any tasks involving welding or cutting parts should be performed by trained professionals. Artec Industries disclaims responsibility for mishaps arising from improper installation, or any damage or accidents resulting from cutting or welding tasks. Exercise caution and seek professional help as required.

SAFETY

1. We've furnished a written installation guide, along with relevant details, to aid you in making safety-conscious decisions.
2. While these guidelines will highlight potential risks, it's crucial to exercise your personal judgment when performing any required steps.
3. Before initiating any tasks, it's essential to conduct a job safety analysis to identify specific hazards in your situation and take measures to eliminate or protect against them.
4. Before commencing the installation of this product, make sure you familiarize yourself with and fully understand all safety warnings and guidelines.

DISCLAIMERS

All Artec Industries products should be installed by a competent, certified individual following the intended installation instructions for each product. Incorrect installations not only nullify any warranties but could also lead to product damage or even damage to the vehicle it's installed on. Prior to installation, carefully read all provided instructions or manuals, and watch any associated videos. For any doubts or queries, reach out to Artec Industries before beginning the installation process.

Many products necessitate lifting and supporting the vehicle off the ground. It is the installer's responsibility to ensure this can be done safely and that the right equipment is at hand to carry out the installation. Artec Industries installation instructions presume the installer is competent to lift the vehicle safely and correctly.

Modified vehicles won't perform identically to their stock counterparts. It's incumbent upon the vehicle owner to understand the alterations such modifications will bring to the vehicle's driving dynamics. These might encompass (but aren't limited to): changes in handling, braking, rollover angle, and potential incompatibilities with the factory-installed anti-lock braking systems, stability control systems, or traction control systems.

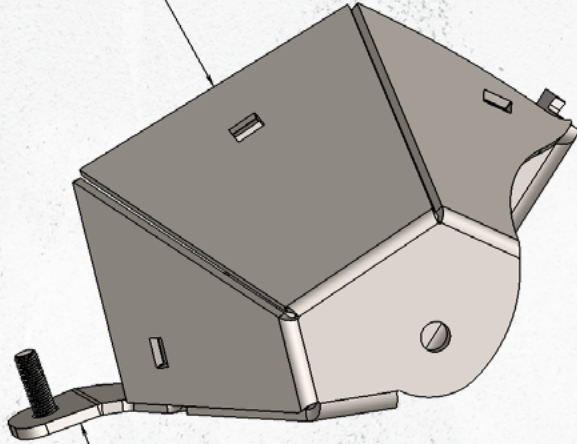
SPECIAL NOTES

- Unless otherwise noted, all hardware should be **LOOSELY** tightened by hand until the very end of installation when all components are attached.

JL4596 PARTS BILL OF MATERIALS

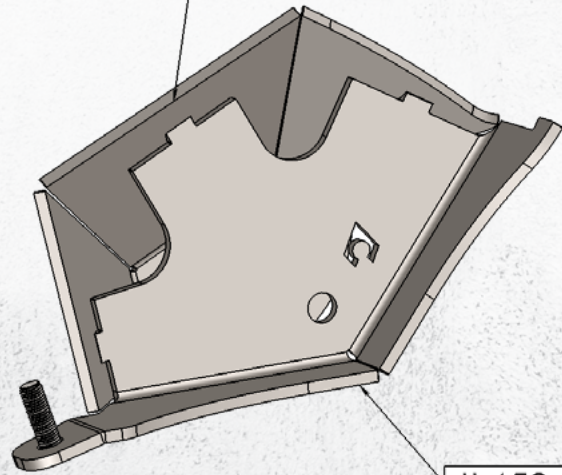
Please confirm you have all the listed parts below **BEFORE** beginning your installation. If any parts are damaged or missing, **KEEP ALL ORIGINAL BOXES and PACKAGING** and contact us.

JL4596-1.A



JL4596-2.A

JL4596-3.A



JL4596-4.A

NOTE: The part numbers indicated above end in a “.” and “letter” which indicate the revision number for the part. The etched part number on your physical parts do not need to match the above drawing revision exactly.

JL4596 BILL OF MATERIALS

ITEM NO.	PART NUMBER	DESCRIPTION	QTY.
1	HW0224	M12-1.5x40mm CUSTOM 10.9 Steel Counter Sink Allen Head Bolt - MAGNI 565 COATING	2

DISASSEMBLY INSTRUCTIONAL GUIDE



Step 1:

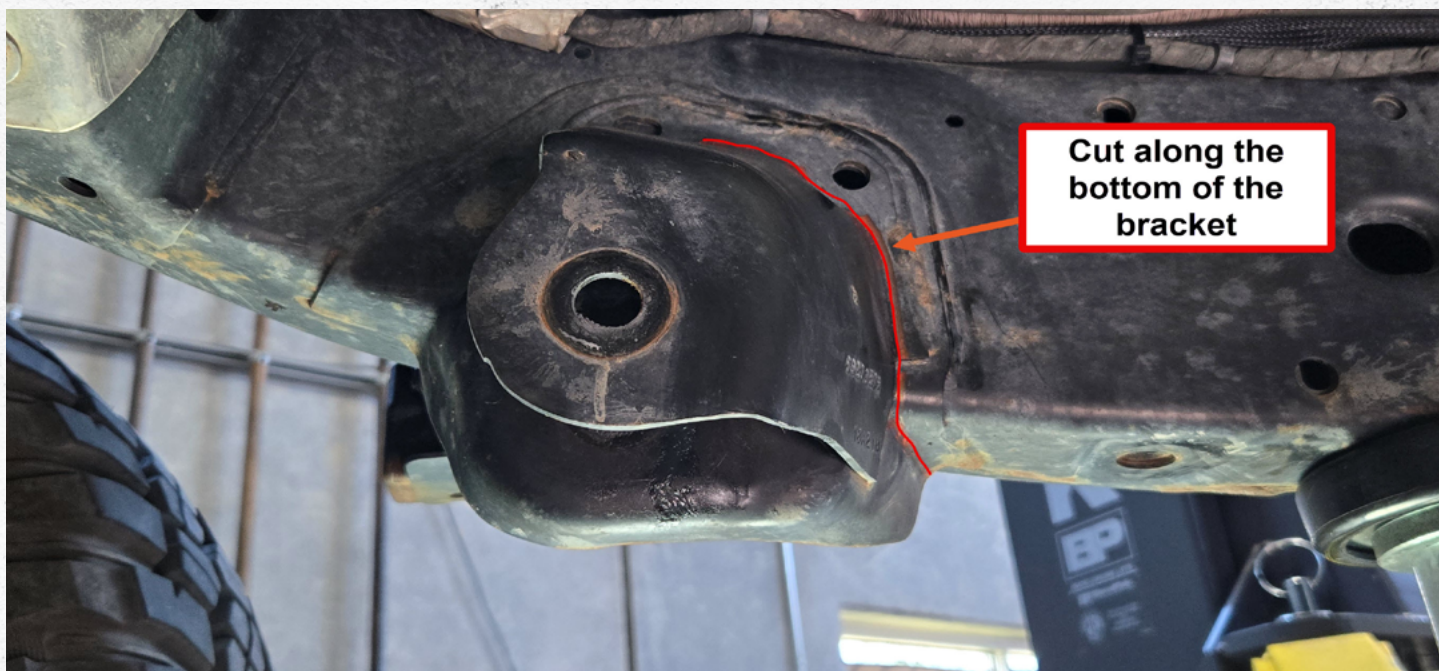
Using a 21mm socket and 24mm wrench, remove the lower control arm bolt on the frame side of the vehicle.



Step 2:

Using a 21mm socket and 24mm wrench, remove the final bolt securing the lower control arm into the vehicle.

DISASSEMBLY INSTRUCTIONAL GUIDE



Cut along the
bottom of the
bracket

Step 3:

Remove the lower control arm bracket **DO NOT** cut off the upper control arm brackets. Remove the bracket along the base of the mount shown with red marker.



Step 4:

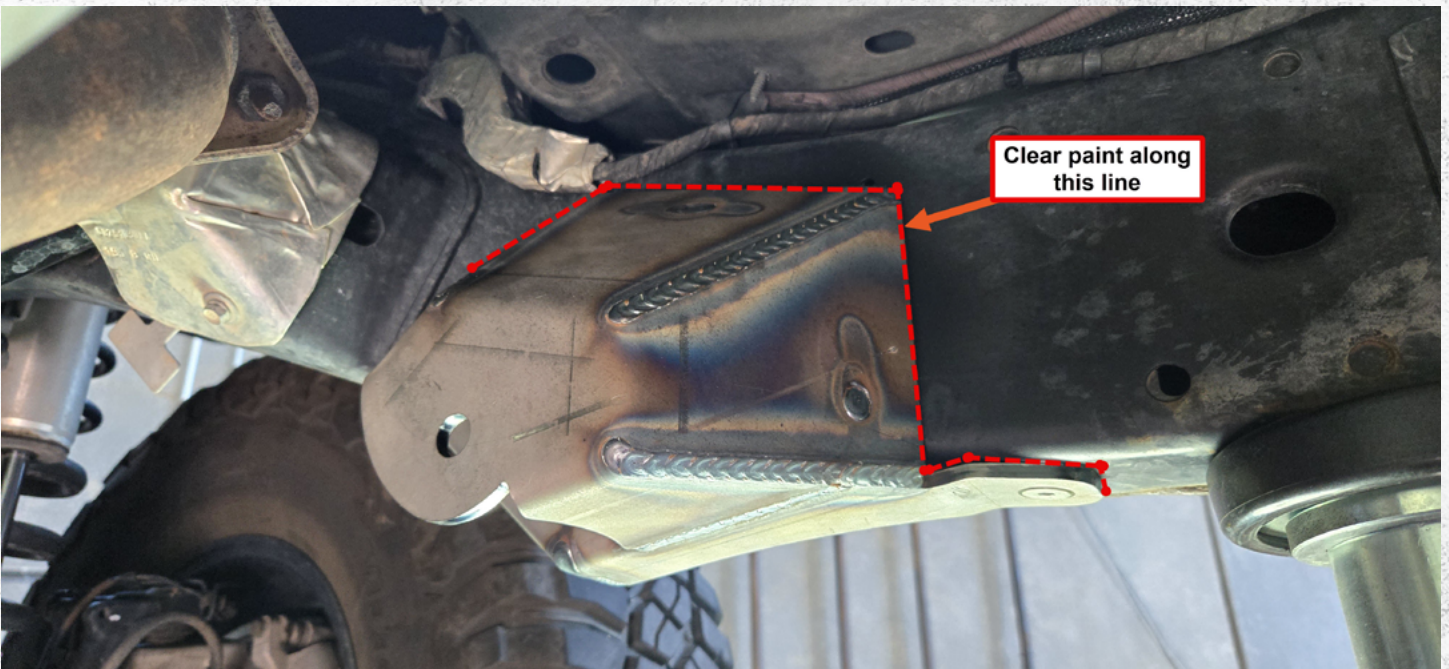
The new bracket is designed to sit on-top of the previous bracket to minimize time spent grinding on the vehicle. Test fit the new lower control arm bracket and remove material until it sits flush with proper gaps for welding.

DISASSEMBLY INSTRUCTIONAL GUIDE



Step 5:

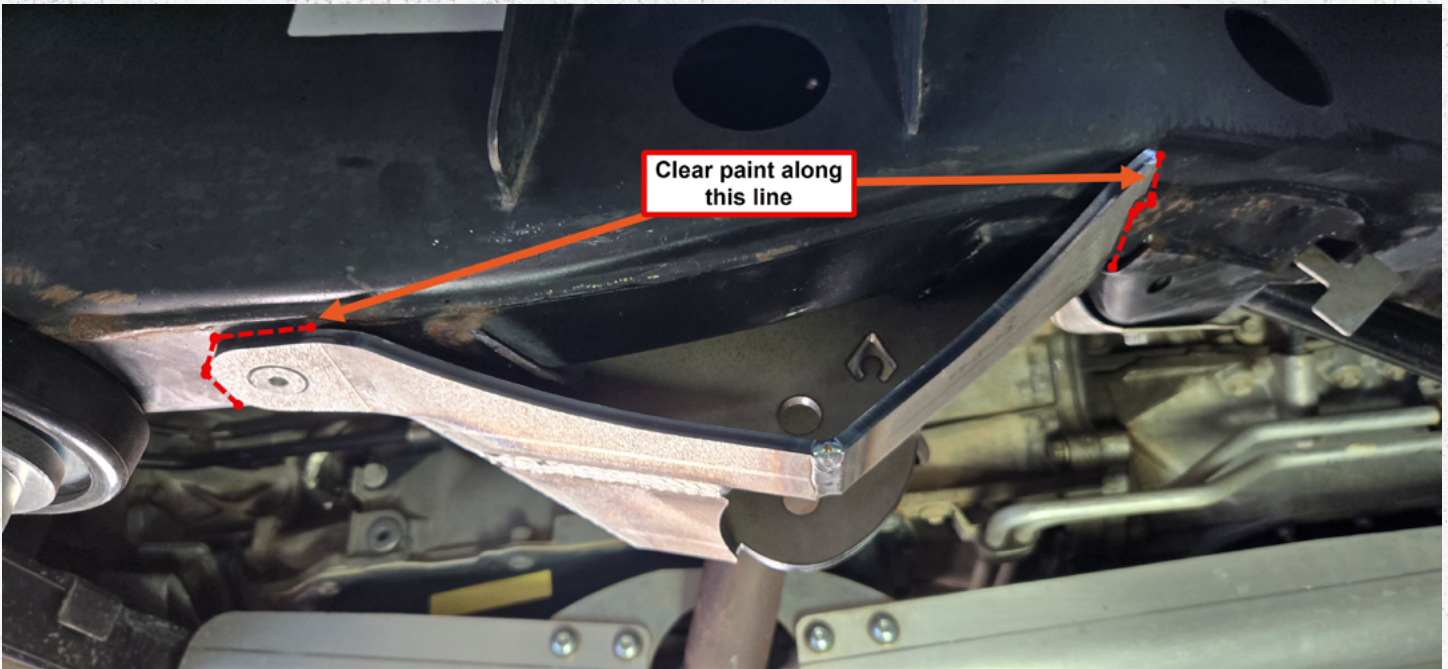
After the final cuts have been made, paint the exposed metal to prevent any corrosion.



Step 6:

Use the M12 x 40mm bolt to snug the new lower control arm into place. After ensuring the fitment. Use marker to indicate where pain needs to be ground off for a structurally safe weld.

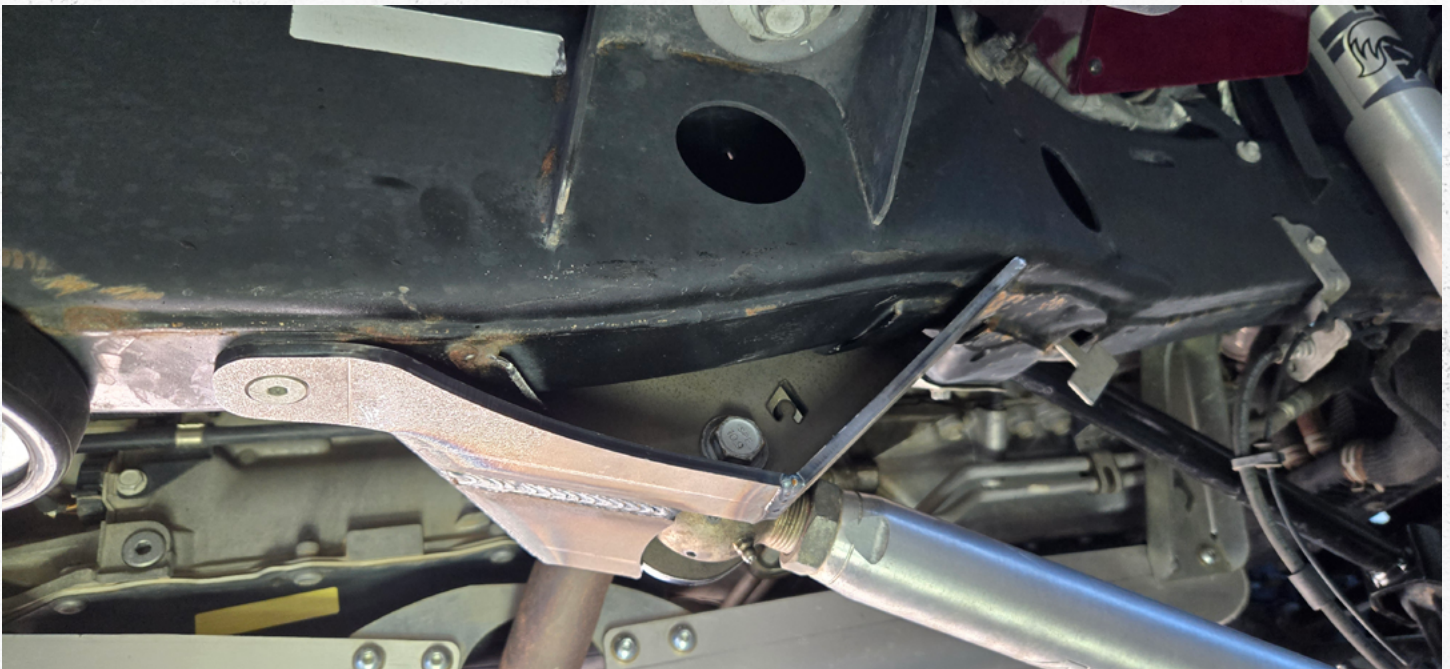
The next pages have continued images of this step.



Step 7:

After cleaning up the area, reinstall the M12 x 40mm countersunk bolt and weld the bracket into place.

When welding to the frame it is important to not put too much heat to alter the frames integrity. Heat the frame up with a torch and weld 2-3 inch sections at a time moving to different sides of the bracket. Doing so will prevent the bracket from warping or damaging the frame.



Step 8:

Paint the bracket to prevent corrosion and reinstall your control arms.

Verify ALL previously installed hardware is tight / torqued to specifications.

CONCLUSION

Congratulations on finishing the installation for your Artec Industries replacement LCA brackets. Before driving your vehicle, inspect all bolts to ensure they are properly tightened.

If you used a vehicle lift, take proper care to ensure you lower your vehicle safely.

Now take your vehicle out and enjoy the outdoors in confidence.

MAINTENANCE / CARE

- After 500 miles, inspect all components and hardware to ensure they are properly fastened.
- If driving during the winter where salt is used on the roads, thoroughly and frequently wash underside of vehicle to prevent salt based corrosion.
- If removal of skid panels is required for vehicle maintenance, and bolts will not loosen, tap the bolt heads with a small sledge hammer using moderate force. This will allow the threads to loosen.
- Spray wax or similar products can be used to create a protective barrier on raw metals to protect against long term corrosion.