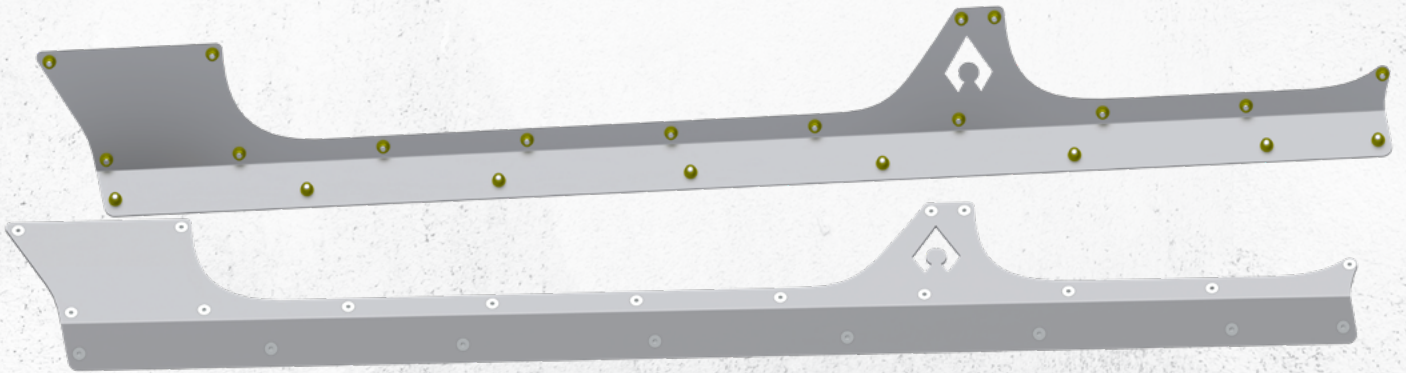




JL0300 **JLU ROCKER ARMOR KIT**



ESTIMATED INSTALLATION TIME

5-7 hours

REQUIRED SKILLS

- General Mechanics Skills

REQUIRED TOOLS & SUPPLIES

- Drill
- 1/8 drill bit
- 17/32 drill bit
- Center punch
- 2-4 rolls of painters tape
- 2-5 clamps
- Press nut tool
- 10mm
- 13mm
- Ratchet
- 5/32 hex bit
- T47 Torx bit
- T45 Torx bit
- Hammer

NOTES:

- Component appearance in instructions may vary from those received

WARNING MESSAGES

This product demands a basic understanding of mechanical procedures and should only be installed by individuals proficient with mechanic's tools. Any tasks involving welding or cutting parts should be performed by trained professionals. Artec Industries disclaims responsibility for mishaps arising from improper installation, or any damage or accidents resulting from cutting or welding tasks. Exercise caution and seek professional help as required.

SAFETY

1. We've furnished a written installation guide, along with relevant details, to aid you in making safety-conscious decisions.
2. While these guidelines will highlight potential risks, it's crucial to exercise your personal judgment when performing any required steps.
3. Before initiating any tasks, it's essential to conduct a job safety analysis to identify specific hazards in your situation and take measures to eliminate or protect against them.
4. Before commencing the installation of this product, make sure you familiarize yourself with and fully understand all safety warnings and guidelines.

DISCLAIMERS

All Artec Industries products should be installed by a competent, certified individual following the intended installation instructions for each product. Incorrect installations not only nullify any warranties but could also lead to product damage or even damage to the vehicle it's installed on. Prior to installation, carefully read all provided instructions or manuals, and watch any associated videos. For any doubts or queries, reach out to Artec Industries before beginning the installation process.

Many products necessitate lifting and supporting the vehicle off the ground. It is the installer's responsibility to ensure this can be done safely and that the right equipment is at hand to carry out the installation. Artec Industries installation instructions presume the installer is competent to lift the vehicle safely and correctly.

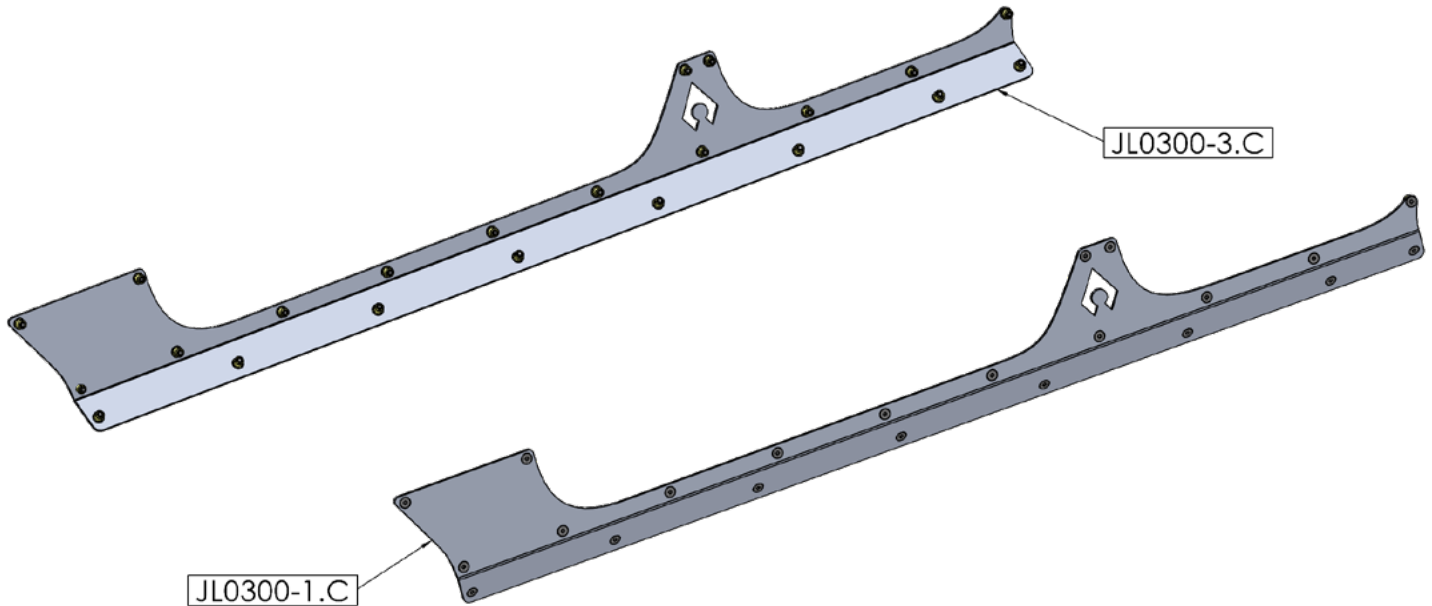
Modified vehicles won't perform identically to their stock counterparts. It's incumbent upon the vehicle owner to understand the alterations such modifications will bring to the vehicle's driving dynamics. These might encompass (but aren't limited to): changes in handling, braking, rollover angle, and potential incompatibilities with the factory-installed anti-lock braking systems, stability control systems, or traction control systems.

SPECIAL NOTES

- Unless otherwise noted, all hardware should be **LOOSELY** tightened by hand until the very end of installation when all components are attached.

JL0300 PARTS BILL OF MATERIALS

Please confirm you have all the listed parts below **BEFORE** beginning your installation. If any parts are damaged or missing, **KEEP ALL ORIGINAL BOXES and PACKAGING** and contact us.



NOTE: The part numbers indicated above end in a “.” and “letter” which indicate the revision number for the part. The etched part number on your physical parts do not need to match the above drawing revision exactly.

JL0300 BILL OF MATERIALS

NOTE: The hardware BOM is specific to the kit and accessories placed in the order.

ITEM NO.	DESCRIPTION	QTY.
●	5/16 -18 x .75in Counter Sink Allen Head Bolt - MAGNI 565 COATING	44
●	5/16-18 Zinc-Plated Steel Heavy-Duty Rivet Nut	44

ASSEMBLY INSTRUCTIONAL GUIDE



Step 1:

If your vehicle is equipped with factory rock rails/ sliders. Remove them using a 10mm and 13mm socket. There are three brackets per side holding the factory rock rails.



Step 2:

Tape the vehicle on each side starting from the middle of the lower door hinge moving to the bottom of the rocker panel.



Step 3:
For this installation we removed the doors for an unobstructed view of our installation process. The doors can be removed using a T47 and T45 bit with ratchet.



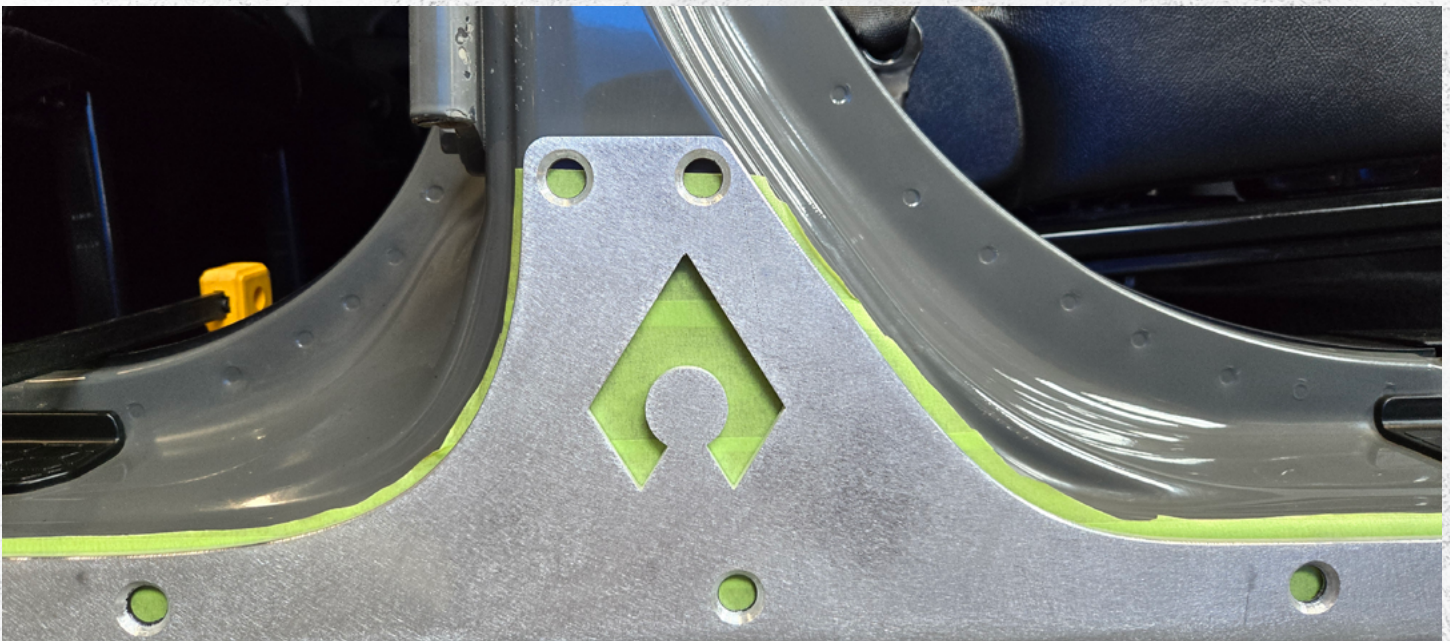
Step 4:
Start with one side of the vehicle by clamping the rocker armor into place.

Clamps should be snug so that you can adjust the rocker armor for equal spacing on vehicles body panels.



Step 5: (A)

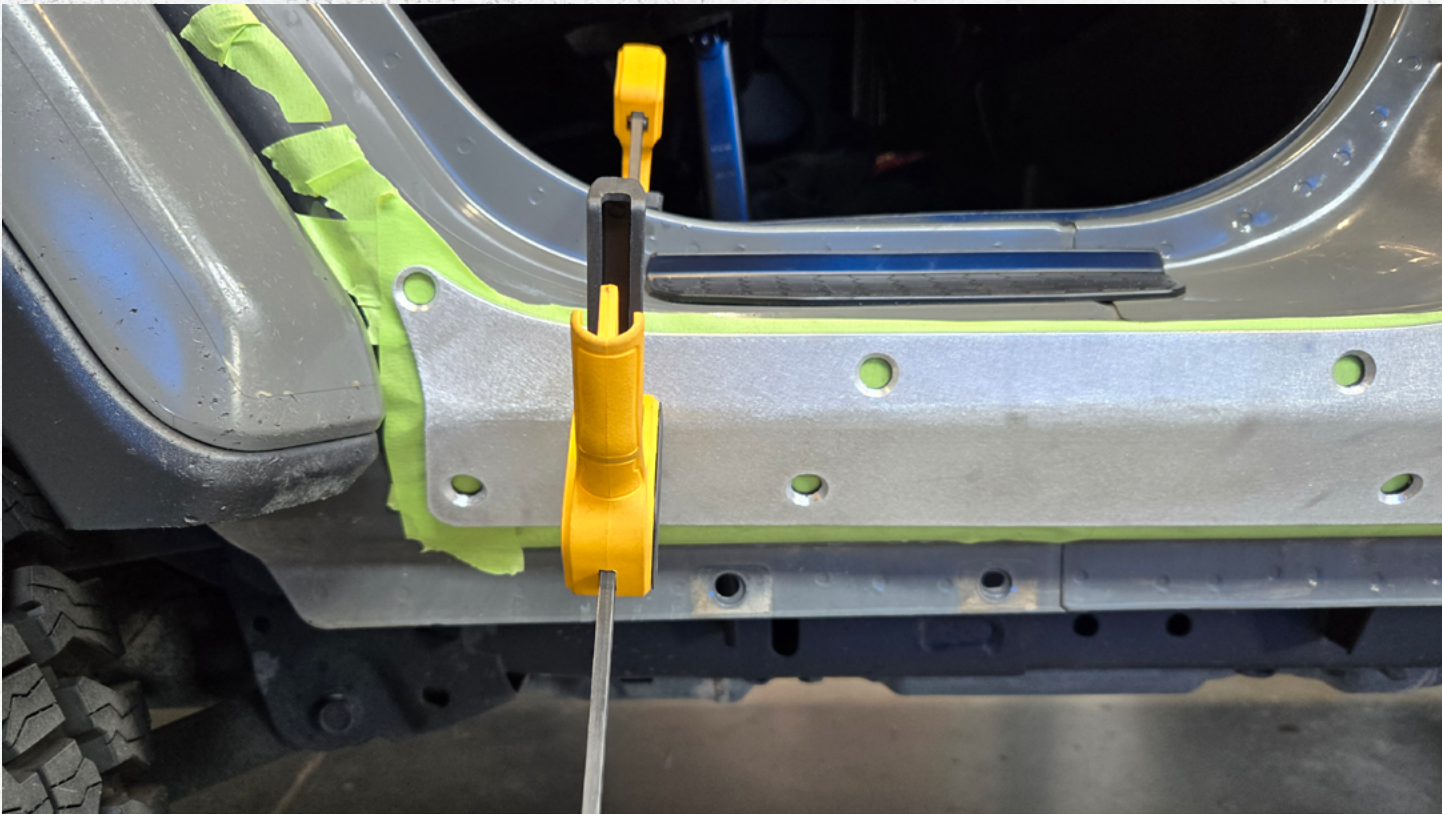
Note that the rocker armor is not aligned to the vehicles center pillar. Removing some of the tape will help you to see the body lines for easier alignment of the rocker armor.



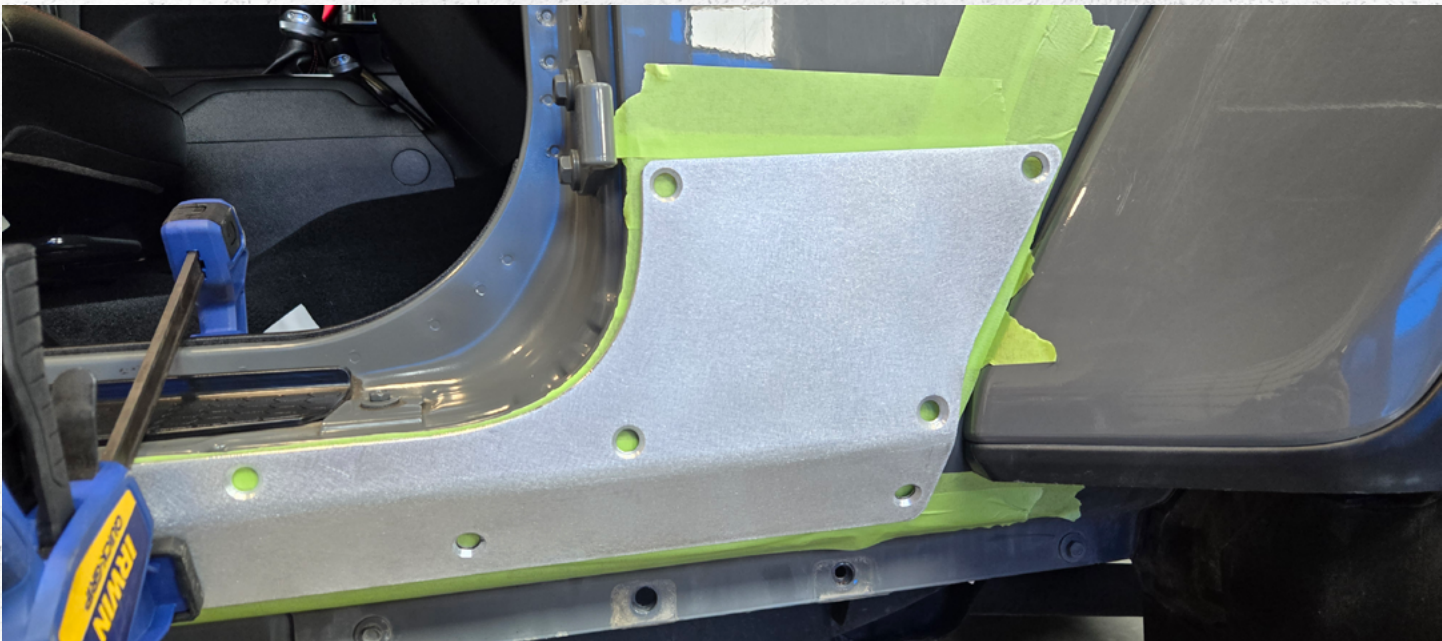
Step 5: (B)

With the clamps snug, gently move the rocker guard until it is first aligned to the center pillar of the vehicle as shown above. Once the center is aligned, clamp it down fully and proceed to check the remaining areas.

More images of the rocker guard alignment on next page.



Step 5 Images

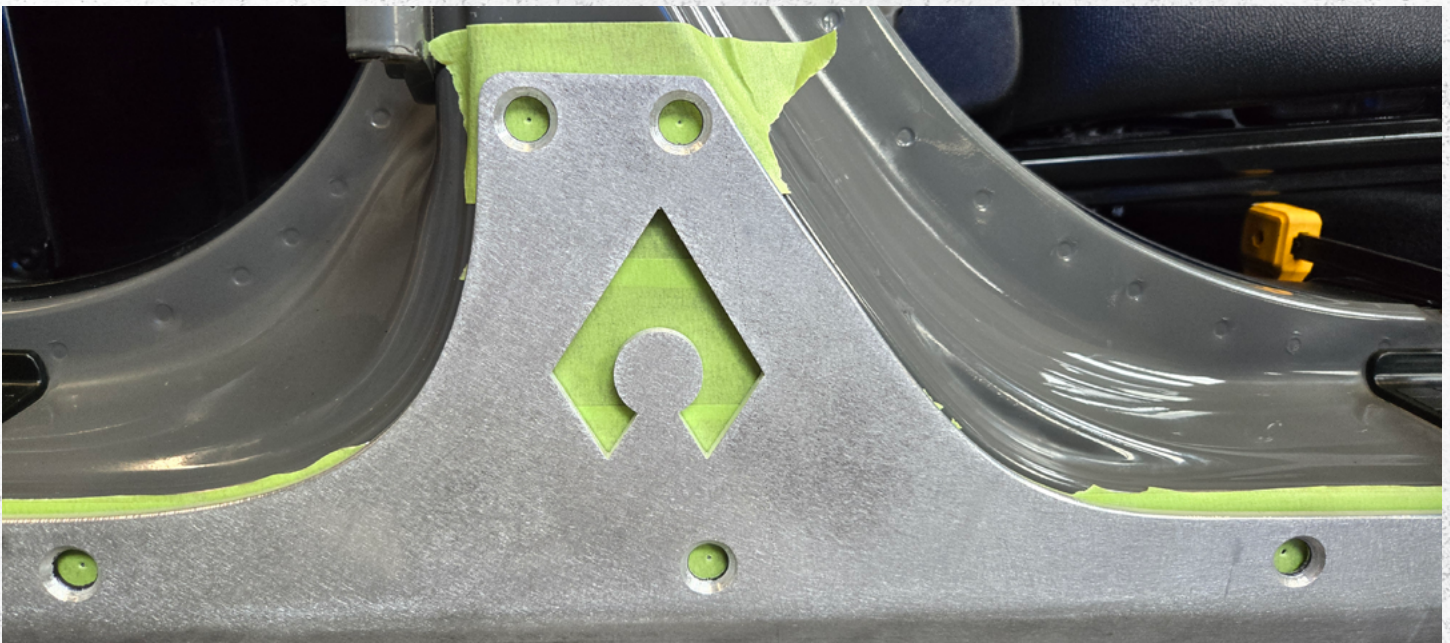


Step 5 Images



Step 6: (A)

For easiest installation, use a hammer with countersunk center-punch.



Step 6: (B)

Center-punch every hole on the rocker armor moving from the center of the vehicle outward.

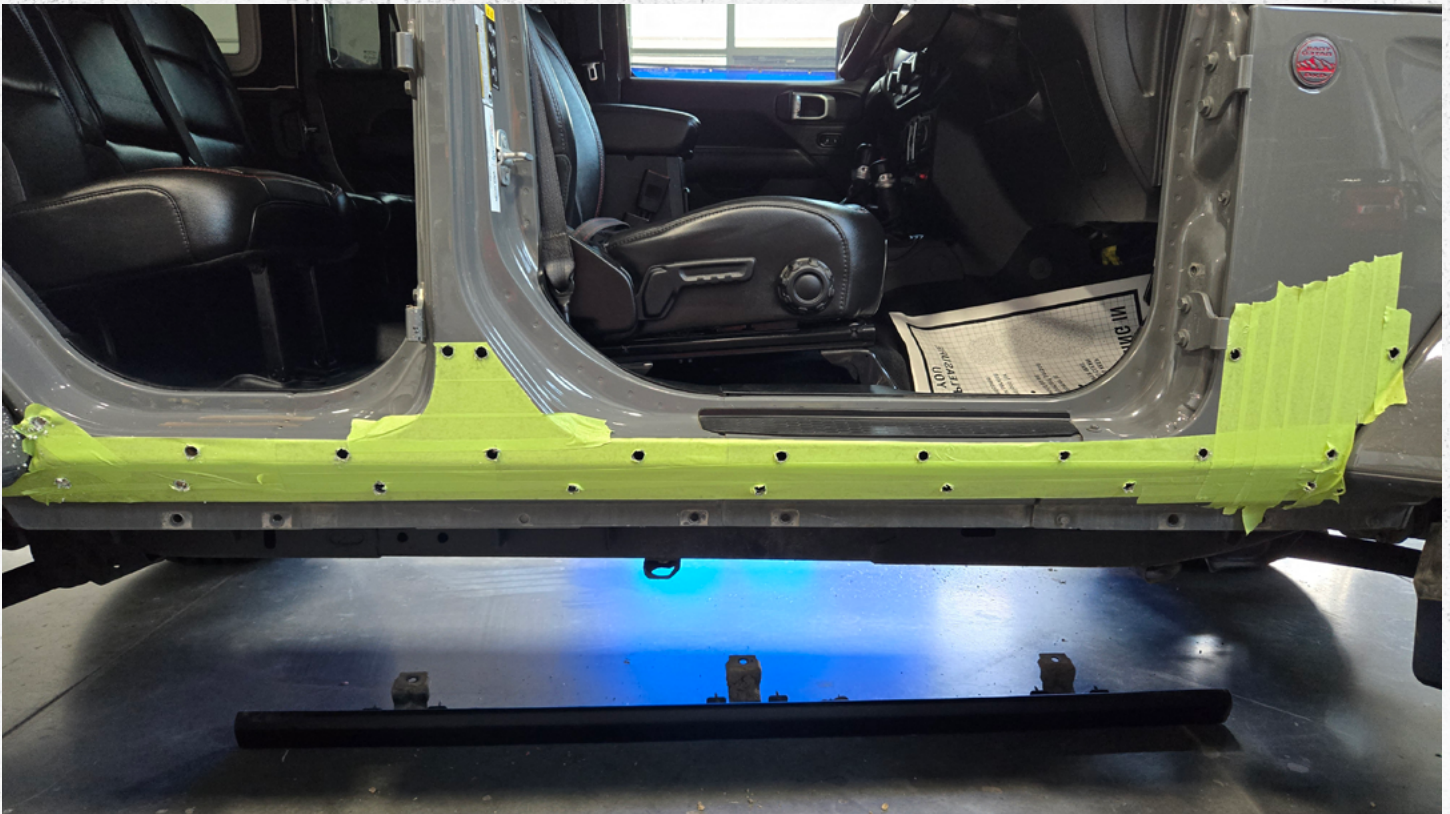
NOTE!!! Ensure that each mark is centered with the panel fully clamped into place, check that each mark is strong enough to drill after removing the rocker armor.



Additional view of step 6: (B)



Step 7
Remove the rocker guard from the vehicle.



Step 8

Drill all holes starting with a 1/8" drill bit moving up to the final 17/32" drill bit. **Take your time here.**

Recommended to move two sizes up until the final drill bit size.



Step 9

Remove the tape after all holes have been drilled.



Step 10: (Optional)

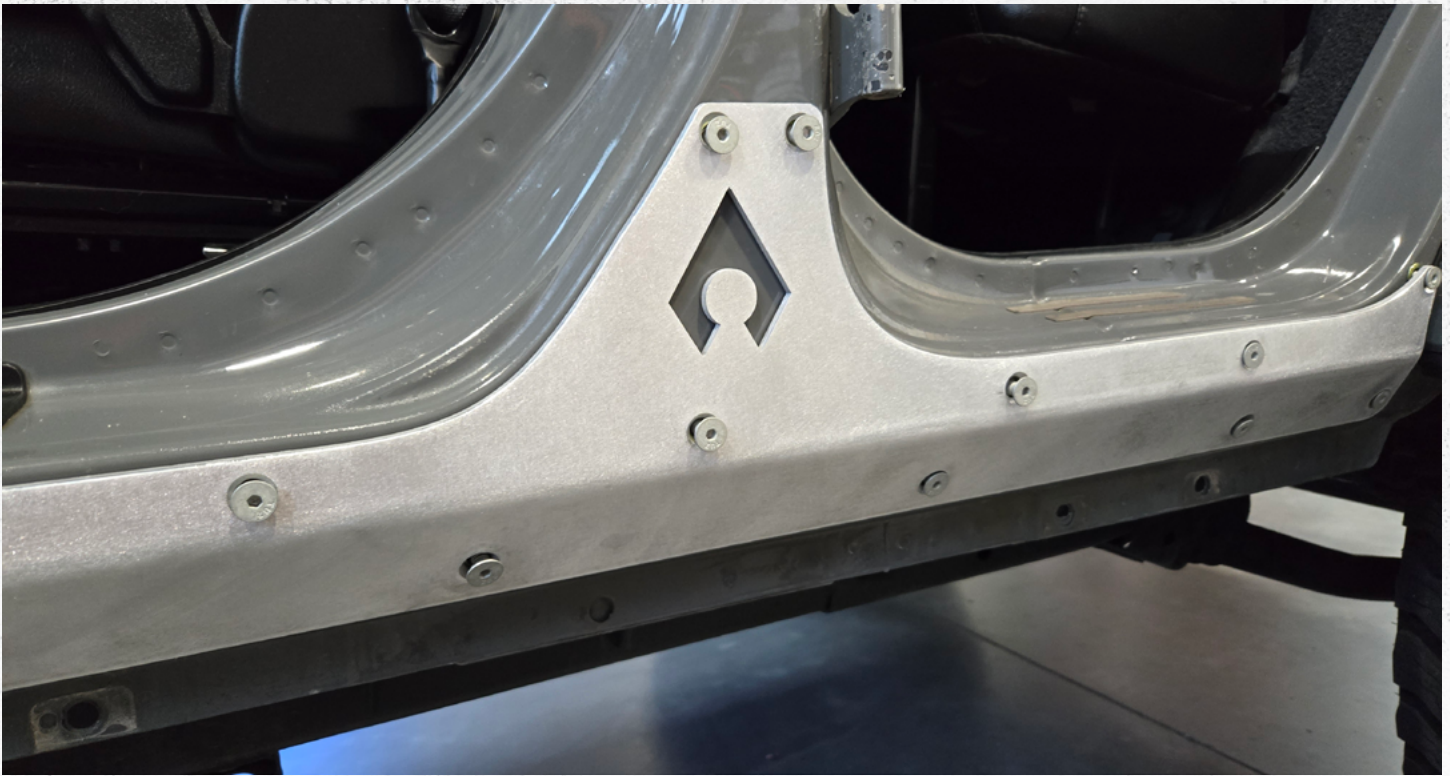
We used a 10mm socket to loosen the driver and passenger front quarter panel to allow our press-nut tool to gain full range of motion.



Step 11:

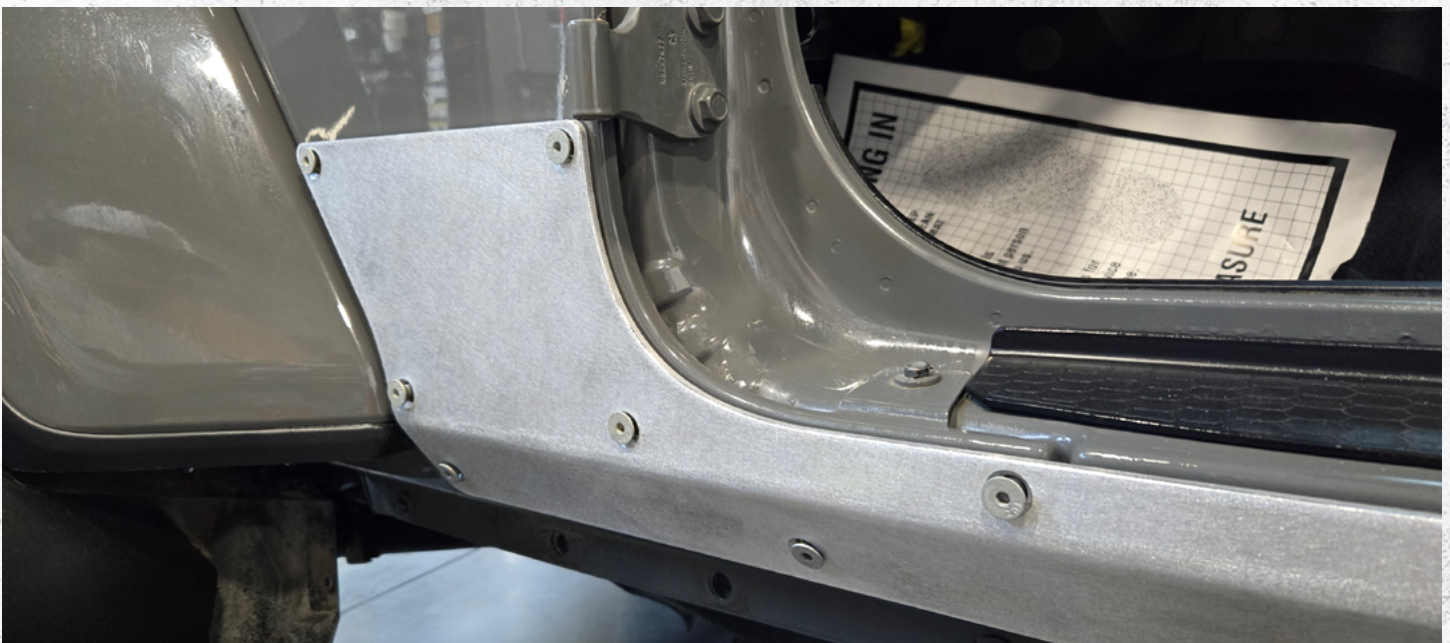
Install the provided press-nuts into the drilled holes, there are 22 per side.

NOTE!!! Set your press-nut tool ensuring it will have sufficient clamping onto one layer of sheet metal. There are portions of the vehicle with multiple layers! please adjust accordingly.



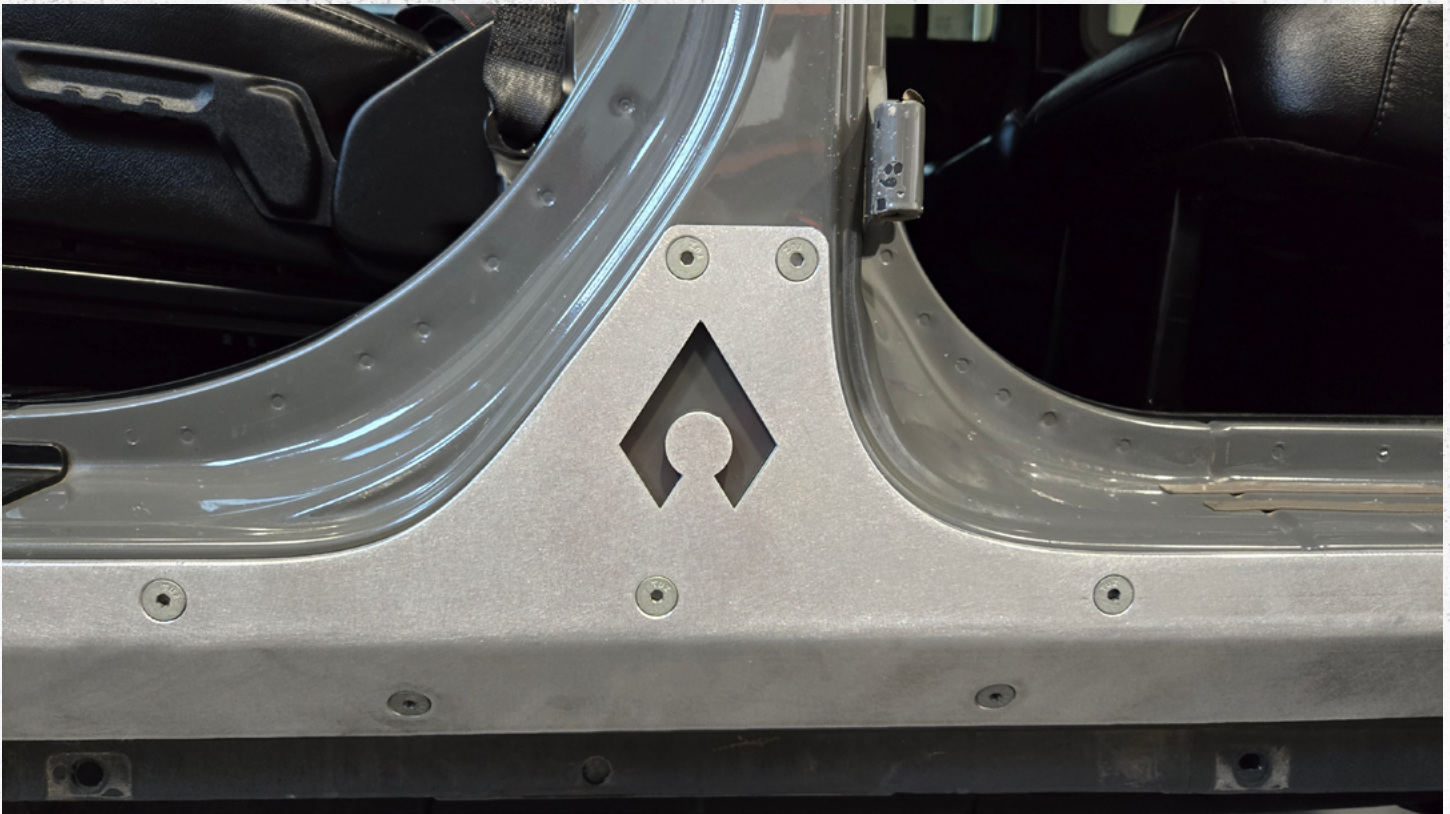
Step 12:

For maintenance, coat each bolt in either ATF, penetrating oil, or other lubricants to prevent bolts from seizing.



Step 13:

Loosely install all hardware starting from the center of the vehicle, then move outward.



Step 14:

Tighten all hardware using a 3/16 hex bit, first tighten the center section. Move from the center of the vehicle outward.



Step 15:

If you have a factory rock rail/ slider, reinstall it using the removed hardware using a 10mm and 13mm socket.



Verify ALL previously installed hardware is tight / torqued to specifications.

CONCLUSION

Congratulations on finishing the installation for your Artec Industries JLU rocker armor. Before driving your vehicle, inspect all bolts to ensure they are properly tightened.

If you used a vehicle lift, take proper care to ensure you lower your vehicle safely.

Now take your vehicle out and enjoy the outdoors in confidence.

MAINTENANCE / CARE

- After 500 miles, inspect all components and hardware to ensure they are properly fastened.
- If driving during the winter where salt is used on the roads, thoroughly and frequently wash under-side of vehicle to prevent salt based corrosion.
- If removal of skid panels is required for vehicle maintenance, and bolts will not loosen, tap the bolt heads with a small sledge hammer using moderate force. This will allow the threads to loosen.
- Spray wax or similar products can be used to create a protective barrier on raw metals to protect against long term corrosion.