



TJ2022 & TJ2036

TJ STANDARD ALUMINUM FRONT FENDER & KIT, TJ/LJ VENTED INNER FENDERS



ESTIMATED INSTALLATION TIME

1-2 hours

REQUIRED SKILLS

- General Mechanics Skills

REQUIRED TOOLS & SUPPLIES

- Socket set
- Hex key set
- Drill bit set
- Drill
- 16-18 ga butt connectors
- Wire stripper

NOTES:

- These instructions are based off the inner and outer fenders being installed together.

WARNING MESSAGES

This product demands a basic understanding of mechanical procedures and should only be installed by individuals proficient with mechanic's tools. Any tasks involving welding or cutting parts should be performed by trained professionals. Artec Industries disclaims responsibility for mishaps arising from improper installation, or any damage or accidents resulting from cutting or welding tasks. Exercise caution and seek professional help as required.

SAFETY

1. We've furnished a written installation guide, along with relevant details, to aid you in making safety-conscious decisions.
2. While these guidelines will highlight potential risks, it's crucial to exercise your personal judgment when performing any required steps.
3. Before initiating any tasks, it's essential to conduct a job safety analysis to identify specific hazards in your situation and take measures to eliminate or protect against them.
4. Before commencing the installation of this product, make sure you familiarize yourself with and fully understand all safety warnings and guidelines.

DISCLAIMERS

All Artec Industries products should be installed by a competent, certified individual following the intended installation instructions for each product. Incorrect installations not only nullify any warranties but could also lead to product damage or even damage to the vehicle it's installed on. Prior to installation, carefully read all provided instructions or manuals, and watch any associated videos. For any doubts or queries, reach out to Artec Industries before beginning the installation process.

Many products necessitate lifting and supporting the vehicle off the ground. It is the installer's responsibility to ensure this can be done safely and that the right equipment is at hand to carry out the installation. Artec Industries installation instructions presume the installer is competent to lift the vehicle safely and correctly.

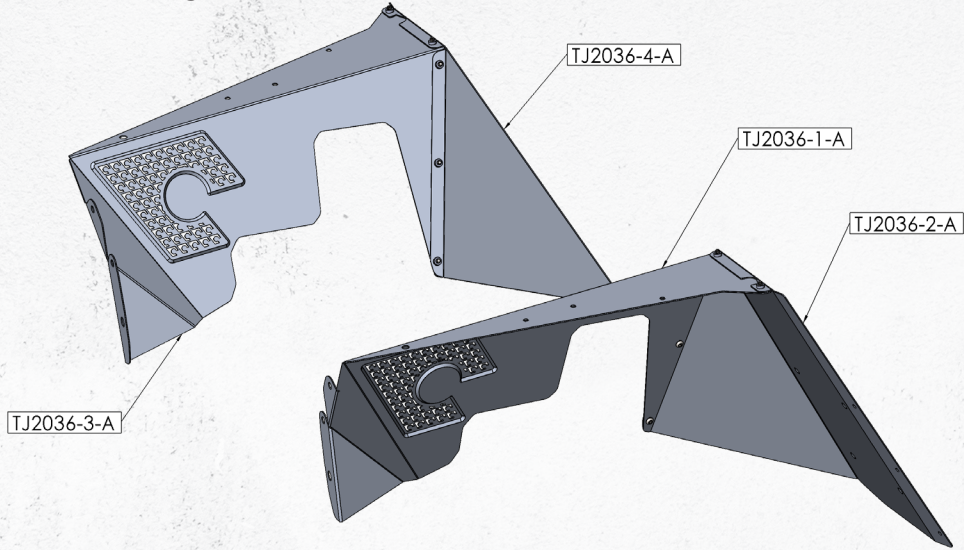
Modified vehicles won't perform identically to their stock counterparts. It's incumbent upon the vehicle owner to understand the alterations such modifications will bring to the vehicle's driving dynamics. These might encompass (but aren't limited to): changes in handling, braking, rollover angle, and potential incompatibilities with the factory-installed anti-lock braking systems, stability control systems, or traction control systems.

SPECIAL NOTES

- Unless otherwise noted, all hardware should be **LOOSELY** tightened by hand until the very end of installation when all components are attached.

BILL OF MATERIALS

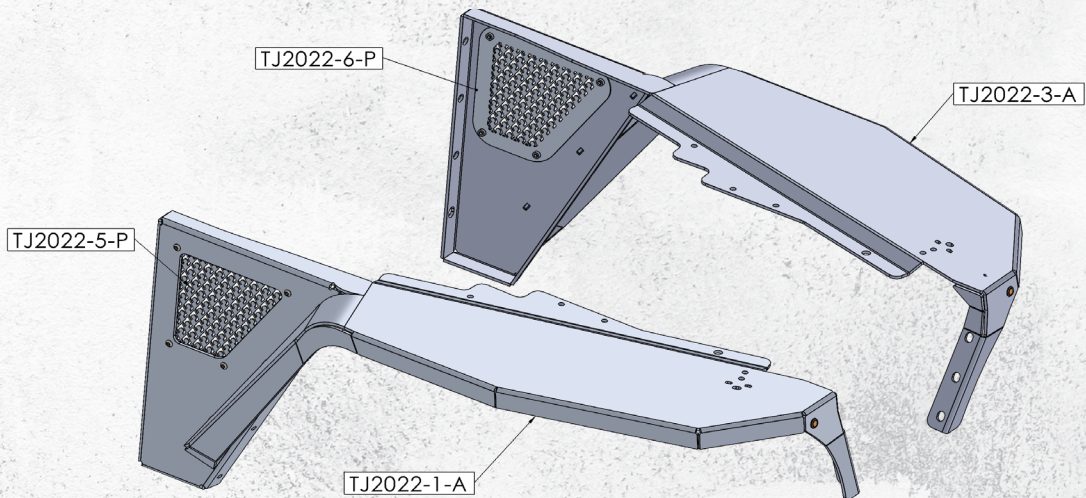
Please confirm you have all the listed parts below **BEFORE** beginning your installation. If any parts are damaged or missing, **KEEP ALL ORIGINAL BOXES and PACKAGING** and contact us.



ITEM NO.	PART NUMBER	DESCRIPTION	QTY.
1	TJ2036-1-A	DVR SIDE BODY, TJ/LJ VENTED INNER FENDERS	1
2	TJ2036-2-P-A	REAR PANEL, DVR SIDE, TJ/LJ VENTED INNER FENDERS	1
3	TJ2036-3-A	PSG SIDE BODY, TJ/LJ VENTED INNER FENDERS	1
4	TJ2036-4-P-A	REAR PANEL, PSG SIDE, TJ/LJ VENTED INNER FENDERS	1
1	HW0092	1/4"-20 x 1/2 Button Head Socket Cap Screw Zinc Plated	10

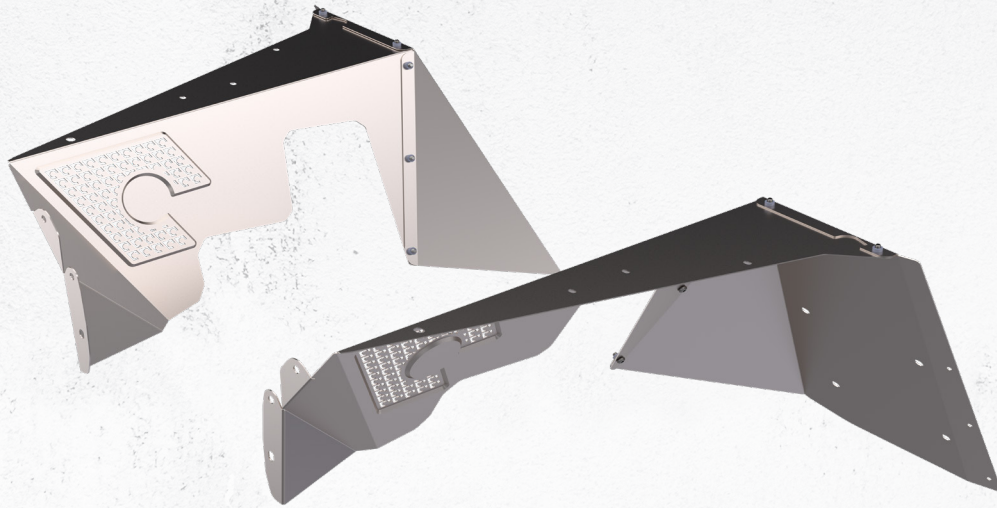
NOTE: The part numbers indicated above end in a "." and "letter" which indicate the revision number for the part. The etched part number on your physical parts do not need to match the above drawing revision exactly.

BILL OF MATERIALS



ITEM NO.	PART NUMBER	DESCRIPTION	QTY.
1	TJ2022-1	PSG SIDE PANEL, TJ STANDARD ALUMINUM FRONT FENDER	1
2	TJ2022-3	DVR SIDE FENDER, TJ STANDARD ALUMINUM FRONT FENDER	1
3	TJ2022-5	PSG VENT PANEL, TJ STANDARD ALUMINUM FRONT FENDER	1
4	TJ-2022-6	DVR VENT PANEL, TJ STANDARD ALUMINUM FRONT FENDER	1
5	HW0092	1/4"-20X 1/2" BUTTON HEAD SOCKET CAP SCREW ZINC PLATED	8
6	OZ1601	LED BOLT LIGHT, 1 WATT, AMBER, ALUMINUM, 16MM, SILVER	2

ASSEMBLY INSTRUCTIONAL GUIDE

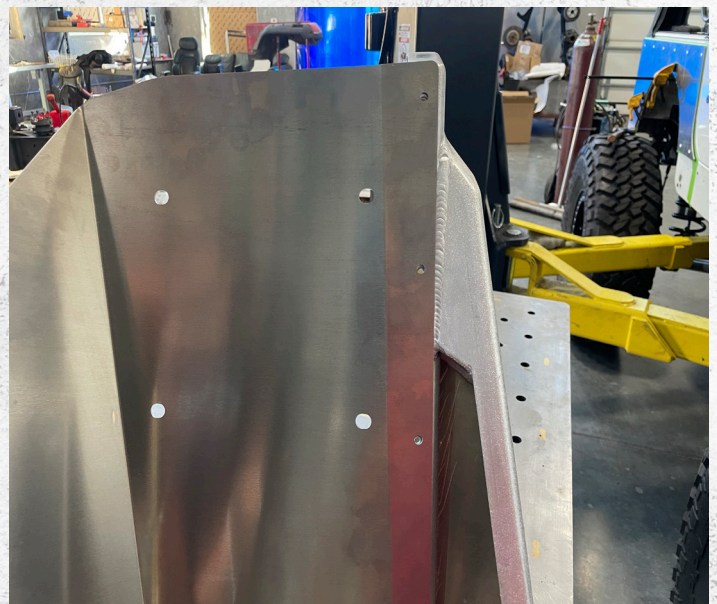
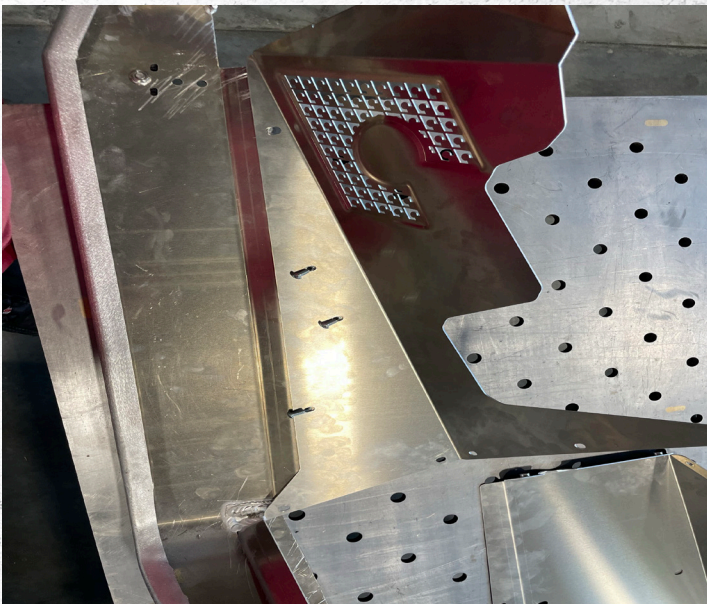


Step 1:

Take your set of TJ2036 you will be putting the driver and passenger side together using your 1/4-20 1/2 button head fastener.

TJ2036-1, TJ2036-2 will make the driver side. Make sure TJ2036-2 is sitting on top of TJ2036-1 so you have a nice inner seam. Repeat step for the Passenger side with the

Important! Please leave all hardware loose for step 2.



Step 2:

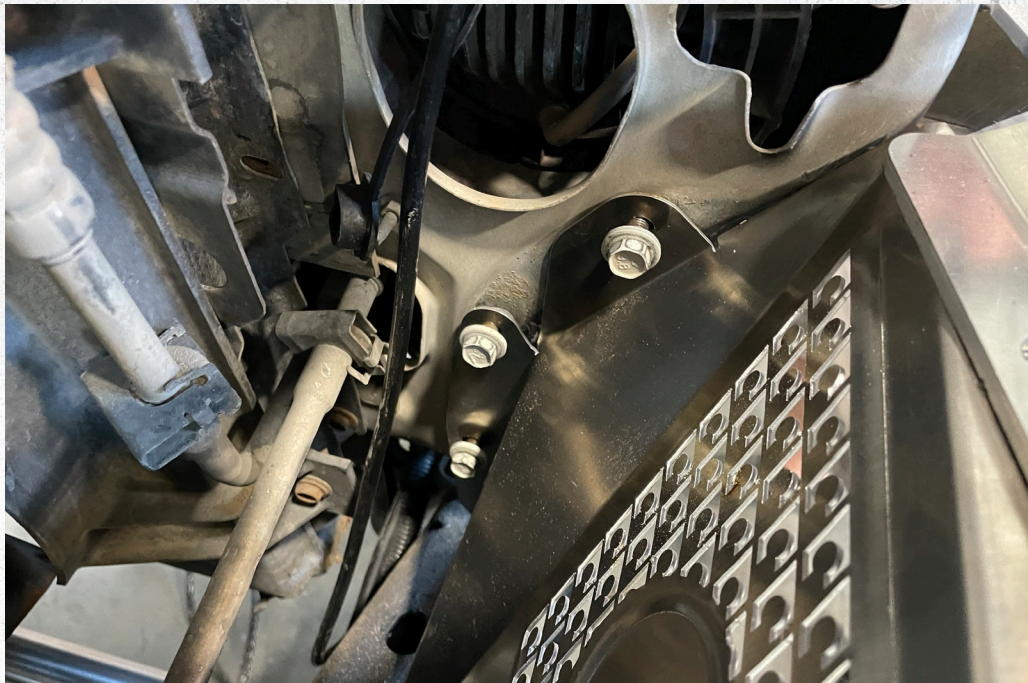
You will now be attaching your TJ2022 & TJ2036. You will need to use 6, 1/4-20 3/4 button head to install each fender. You will have 3 on the inner top of the fender and 3 on the back. Make sure you thread the bolts from the bottom up. Please keep these bolts loose for the next few steps.



Step 3:

You have 3 spots where you will be using the factory fender hardware to mount your driver and passenger fenders. Its recommended to start with threading one bolt to the rear of the fender. Next you want to also thread one bolt to the front outer section of the fender. When you finish, go ahead and thread the remaining 3 in the rear and the remaining 2 in the front.

Important! Please keep all bolts loose for proper adjustment.



Step 4:

Final factory mounting spot. You should have 3 more factory bolts to secure the inner fender. These are located on the back side of the headlight holes. Be sure not to tighten fully.



Step 5:

There're 3 spots where you should look to make sure the fender matches your factory body lines. First is the gap between your hood & fender, fit however you like just make sure you leave a small gap between the hood. Second spot is the back of the fender and your body, line up so its smooth. Third is the inner fender make sure it clears from any rubbing.

Important! Now make sure every bolt is tight for final install.



Step 6:

Now Install TJ2022-5 & TJ2022-6. You will need 8 of your 1/4"-20x1/2" Button head, secure it fully.



Step 7:

You will need to now wire in the blinkers for driver and passenger side. Please check with a voltmeter to see what wire is positive and negative. With your blinker rout the wires through the front fender hole before you start wiring. Make sure you also thread the 2 nuts that come with the light before wiring. When wiring you should have a black and a red wire, black will be negative and red will be positive. Please use some type of wire loom to maximize protection of the wire when finished.

Step 8:

You will need to now mount your fuse box, washer fluid, etc.... Note there is no designated holes on the fender. This is where you decide on how you want to mount everything in the engine bay. Note we drilled through our fenders and mounted that way, Be sure to thread the bolts from the inner fender and have your nut on the inside of the engine bay.

Verify ALL previously installed hardware is tight / torqued to specifications.



CONCLUSION

Congratulations on finishing the installation for your Artec Industries front fender replacement. Before driving your vehicle, inspect all bolts to ensure they are properly tightened.

If you used a vehicle lift, take proper care to ensure you lower your vehicle safely.

Now take your vehicle out and enjoy the outdoors in confidence.

MAINTENANCE / CARE

- After 500 miles, inspect all components and hardware to ensure they are properly fastened.
- If driving during the winter where salt is used on the roads, thoroughly and frequently wash your vehicle to prevent salt based corrosion.
- Spray wax or similar products can be used to create a protective barrier on raw metals to protect against long term corrosion.